

# AESOP'S FABLES: ON STAGE!

## 1ST GRADE PERFORMANCE

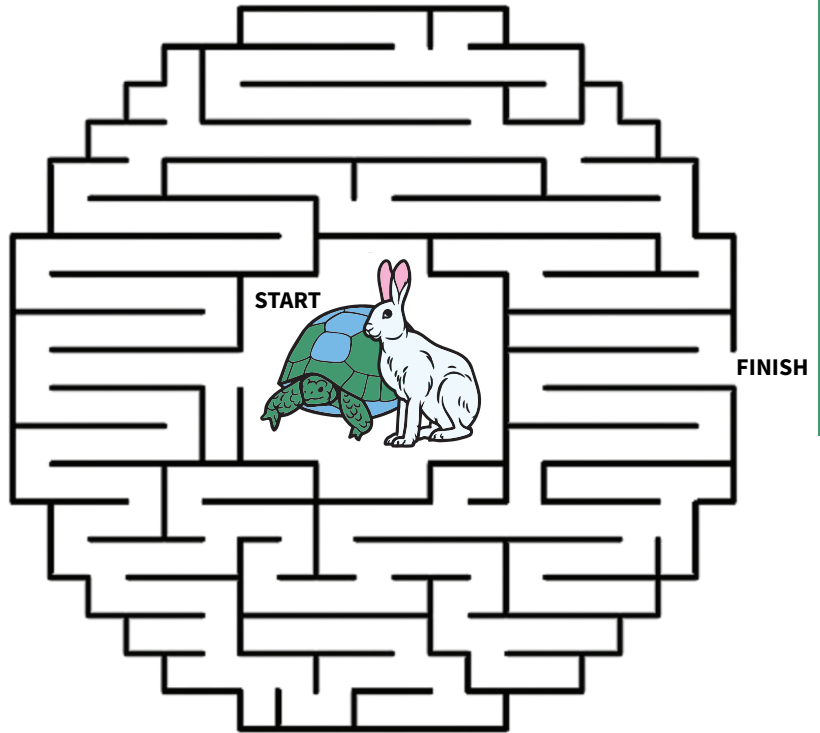
### HEY FIRST GRADERS!

We are so excited to share this special performance all about Aesop and his fables and parables! You're about to see some fun stories with animals that can talk, silly situations, and important lessons. Aesop was a storyteller from a long, long time ago, and his fables have been shared with people all over the world.

One of Aesop's fables that you will learn about in the performance is "The Tortoise and the Hare."



Use a pencil and help Torty and the Hare escape the maze by getting to the FINISH!



### BEFORE THE SHOW



- You will learn the difference between a fable and a parable!
- Imagine what you think the set, costumes and props will look like for the show. How do you think the stories will be brought to life on stage?



### AESOP'S WORD HUNT

Find the names of Aesop's favorite animal characters listed in the word bank below.

ANT	HARE
CROW	LION
FOX	MOUSE
GOOSE	TORTOISE
GRASSHOPPER	DOG

K W G M E L Z K F M D N P J Z  
V T P W M E X J W B O L M A I  
T O J L K G O O S E G U R N B  
R R I I K L O N N I G Q S T I  
H T T O B U B J Z Y U A S E I  
I O K N Y X F O X C R O W U D  
F I A G R A S S H O P P E R O  
T S H C C G U Z I H A R E E G  
A E D U I E S R T Q V M U U V  
T Z I C N Z C K A G A R C Q A

# AESOP'S FABLES: ON STAGE!

## 1ST GRADE PERFORMANCE

### HOW TO WATCH THE SHOW

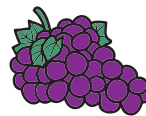
- **Listen closely:** The animals in the fables and people in the parables have important things to say!
- **Watch carefully:** Look for the lesson in each story. What are the characters trying to teach us?
- **Be respectful:** Let's be quiet so everyone can hear the actors on stage.
- **Clap and laugh:** If you see something funny or exciting, it's okay to clap or laugh! The actors love it when you enjoy the show.

### AESOP'S MATCHING GAME

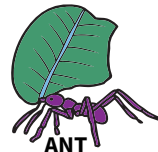
During the performance, try to remember which characters belong together in each fable and parable. At the end of the show, see what you remember by drawing a line to the characters that match!



DOG



GRAPES



ANT



PAIL



MILKMAID



GRASSHOPPER



FOX



BONE

### AFTER THE SHOW

When the performance is over, think about what you've learned. Here are some questions to help you remember the stories:

Which fable was your favorite? Why?

---



---

What lesson do you remember most?

---



---

Did the costumes, set and props look like how you imagined they would? What were the differences?

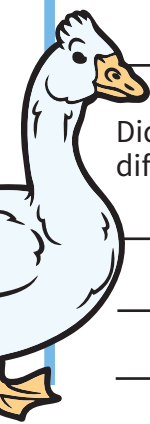
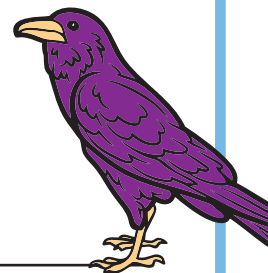
---



---



---



Don't forget to send us a letter or picture! We love hearing about your experience with our play. Your teachers can help you get those in the mail to us!