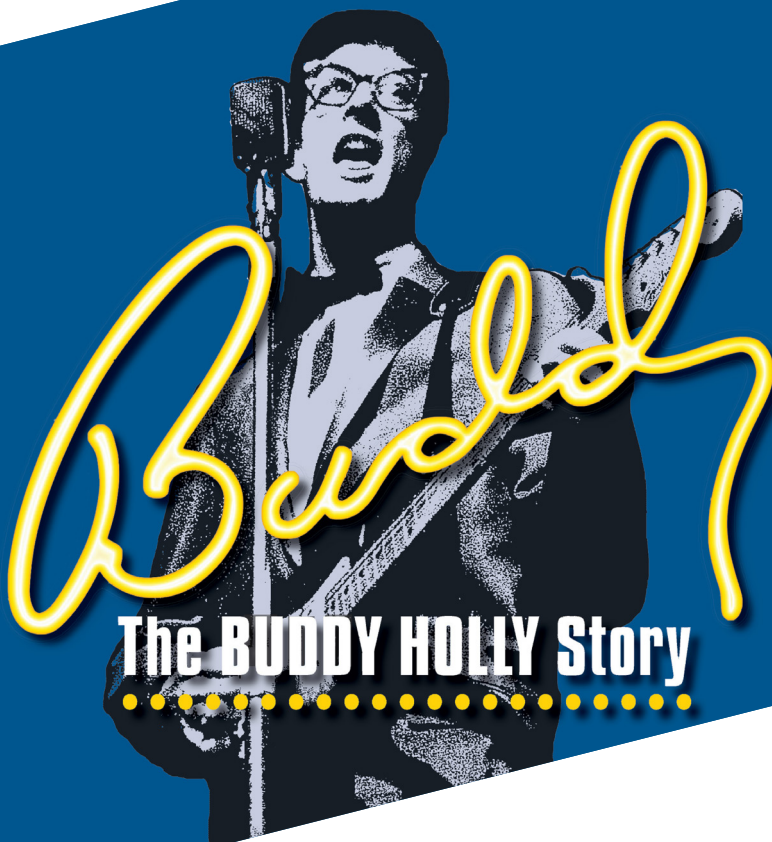


THE **REV** THEATRE CO.

SEASON SPONSOR: **M&T**Bank



The **BUDDY HOLLY** Story

 **LNB** Banking.
It's all about people.

TOMPKINS 
Trust Company

 generations bank



generations

bank Member FDIC // agency // investment services

Keeping your life on script

mygenbank.com

LNB Is Proud to Serve as Your Hometown Bank!



LNB's Grant Avenue office

From our great rates to our unmatched customer service,
LNB is here to help you enjoy your next banking experience.

Stop in, or call us today!



LNB Banking.

It's all about people.

Member FDIC



LNB Grant Ave.

311 Grant Avenue Rd.
Auburn, NY 13021
(315) 567-0200

LNB Downtown Auburn

63 Genesee Street, Suite 3
Auburn, NY 13021
(315) 612-3456

BankwithLNB.com/Cayuga



Via Mondo Travel
 315-707-4372
 rosemary@ViaMondo.net
 www.ViaMondo.net

Regenerations



Unique Consignment
 Boutique
 For every lifestyle

101 Genesee Street
 Downtown Auburn, NY

Under the Black & White Striped Awning

- Furnishings
- Home Décor
- Textiles
- Brand Name Clothing
- Upcycles
- Vintage
- Artisan made products
- Soaps, Candles
& More!

"Like" us out on Facebook!
 315.406.0097
 www.regenerations2.com

**the
 auburn
 musician**



**Quality Musical
 Instruments**

**Professional
 Instructors**

**The Only Store
 Owned &
 Completely Staffed
 by Musicians**

Open Weekdays
 'til 7 PM
 Saturdays
 'til 3 PM

165 Grant Ave
 Auburn, NY
315-253-4966

**CL
 NB**


**Cayuga Lake
 National Bank**

CUSTOMER FOCUSED. COMMUNITY MINDED.

CAYUGALAKENATIONALBANK.COM

(315) 889-7358

HAVE A SPECTACULAR SEASON!



**BOYLE
&
ANDERSON, P.C.**

ADOPTION BUSINESS PLANNING
HOSPITALITY LAW IMMIGRATION
LITIGATION MEDICAID PLANNING
REAL ESTATE VEHICLE & TRAFFIC
WILLS, TRUSTS AND ESTATE ADMINISTRATION

ATTORNEYS AT LAW SINCE 1928

♦ ROBERT E. BARRY ♦ ROBERT K. BERGAN ♦ ALLY L. COLVIN
♦ DAVID G. TEHAN ♦ CHARLES H. LYNCH, JR. ♦ JOHN P. McLANE ♦ MICHAEL D. QUILL, JR.

110 GENESEE STREET, SUITE 300 ♦ AUBURN, NY ♦ 13021
PH. (315) 253-0326 ♦ FAX (315) 253-4968 ♦ WWW.BOYLEFIRM.COM



Bond

See Things From Every Angle

Call Bond when you want a law firm that understands your unique business needs and opportunities. We take the time to consider every angle and provide you with personalized solutions. We're a firm devoted to a thriving future for our clients and the communities in which we live.

 **BOND** SCHOENECK
& KING ATTORNEYS

ALBANY BUFFALO GARDEN CITY NEW YORK CITY ROCHESTER
SYRACUSE SARATOGA SPRINGS UTICA NAPLES, FL KANSAS CITY BOSTON

One Lincoln Center, Syracuse, NY 13202 • 315.218.8000 • BSK.COM



144 Genesee St.
Suite 502
Auburn, NY

Telephone: (315) 253-3217
Fax: (315) 253-3090

Nancy L. Oplinger, M.D.
Richard J. Freeman, M.D.
Tara A. Brackley O.D.



**JANE MORGAN'S
LITTLE HOUSE**
*Where your favorite
outfit is waiting!*

**378 Main Street,
Aurora, NY 13026
315-364-7715**

*Joseph Ribkoff
Chalet • Foil
Joules • Fat Hat
Clara Sunwoo
Alex Evenings
Lisette • Mansted
Habitat • Fridaze
IC Collection
Alashan Cashmere*

**Special Occasion
and Mother of the
Bride & Groom**

Mon – Sat 10-5
Sunday – closed

*Aunt Jane's Attic
Sale room...*

(315) 634-1100
www.hospicecnyc.org

Hospice of Central New York
& of the Finger Lakes

**Providing hope, peace and
comfort for over 30 years**

*Proudly serving Cayuga, Onondaga,
Oswego and Madison counties*

2020-21 ITHACA COLLEGE THEATRE SEASON

SHE KILLS MONSTERS

By Qui Nguyen

THE MAGIC FLUTE

By Wolfgang Amadeus Mozart

SWEENEY TODD

Music & Lyrics by Stephen Sondheim
Book by Hugh Wheeler

HEAD OVER HEELS

Music & Lyrics by the Go-Go's
Book by Jeff Whitty & James Magruder

DANCE CONCERT

Original Choreography by Ithaca
College Theatre Faculty

THE TROJAN WOMEN

By Euripides
Translation by Ellen McLaughlin



ITHACA COLLEGE

Department of Theatre Arts

BOX OFFICE:
607-274-3224
boxoffice@ithaca.edu
tickets.ithaca.edu

BOARD OF DIRECTORS 2020:



Roberta Williams
President
WHMB P.C.



Connie Bouck
1st Vice President



Susie Gaynes
2nd Vice President



Kelly Wejko
Secretary
Cayuga County
Supreme & County
Court



Christie Schwab
Treasurer
Generations Bank



Bill Abdallah



Joe Bartolotta
JBJ Real Property



Cathy Benson
Community Federal
Credit Union



Patrick Carbonaro
Carbanaro Law
Offices, P.C.



Menzo Case
Generations Bank



Matt Chalanick
The Real Estate
Agency



Martha Conboy



Peggy Dickman
Dickman Farms



Judy Foresman



Diana Gagliostro
Muldoon Dry
Cleaners, Inc.



Pamela Heleen
Cayuga Community
College



David Tehan
Boyle & Anderson, P.C.



Angela Winfield
Cornell University

THE REV THEATRE COMPANY ADMINISTRATIVE STAFF:



Jessica Alexander
Development
Associate



Ed Bauso
Marketing Assistant



Melissa Carbonaro
Business Manager



Lisa Chase
Director of
Education



Bily Goheen
Company Mgmt.
Apprentice



Gina Guerriere
Director of
Audience Services



Shane Heidecker
Box Office Associate



Geoffrey Howard
Technical Director,
Education



Tiffany Howard
Costume Shop
Manager/Designer



Michael Iannelli
Production
Manager



Erin Katzker
Educational
Theatre Manager



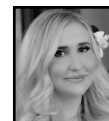
Joshua Katzker
Artistic Associate/
PITCH Coordinator



Lynnette Lee
Managing Director



Rocky Love
Technical Director



Amanda Lubaszewski
Asst. to the Producing
Artistic Director



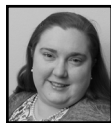
Christopher Lynch
Company Manager



Marshall Pope
Props Master



Dylan Parmenter
Facilities & Vehicles
Manager



Lisa Robillard
Audience Services
Manager



Olivia Semsel
Marketing Manager



Brett Smock
Producing
Artistic Director



Ashley Wilson
Wardrobe Supervisor

THE REV THEATRE COMPANY STAFF:

PRODUCTION MANAGEMENT

Production Manager **Michael Iannelli**
Production Assistant **Jared Curti**
Production Assistant **Violet Moncavage**

PAINT SHOP

Scenic Charge **Kaitie Branton**
Scenic Artist **Bianca Binneman**
Painter **Roslyn Palmer**

PROPERTIES

Props Master **Marshall Pope**
Props Apprentice **Nora Galley**

SCENE SHOP

Technical Director **Rocky Love**
Asst. Technical Director **Patrick Hardison**
Scene Shop Supervisor **Jalissa Frye**
Show Carpenter **Anthony LiDestri**
Carpenter **Mikayla Canham**
Carpenter **Doriana Lichter**
Carpentry/Electrics Swing **Dylan Howick**
Carpentry Apprentice **Annie Skinner**

SOUND

Sound Engineer **Eric Agsten**
A2 **Mikayla Canham**

ELECTRICS

Master Electrician **Chris Lipstreu**
Assistant Master Electrician **Devin Croad**
Electrics Intern **Molly Sharples**
Electrics Intern **Sam Burkovich**

COSTUMES

Costume Shop Manager **Tiffany Howard**
Asst. Costume Shop Mgr. **Meaghan Carlo**
First Hand **Rachel Saylor**
Cutter/Draper **Cassidy Huscher**
Costume Shop Apprentice **Rebekah Clow**

WARDROBE

Wardrobe Supervisor **Ashley Wilson**
Wardrobe Apprentice **Juliana Krampf**
Wig/Makeup Supervisor **Michael King**

STAGE MANAGEMENT

Production Stage Manager - **Nolan Todd**
Assistant Stage Manager - **Beau Lettieri**
SM Intern - **Sydnei Williams**

COMPANY MANAGEMENT

Company Manager **Christopher Lynch**
Company Mgmt. Apprentice **Billy Goheen**
Company Mgmt. 2nd Apprentice **Whitley White-Body**
Company Mgmt. Intern **Morgan Jennings**

BOX OFFICE

Director of Audience Services **Gina Guerriere**
Audience Services Manager **Lisa Robillard**
Box Office Associate **Shane Heidecker**
Box Office Associate **Nancy Hunt**

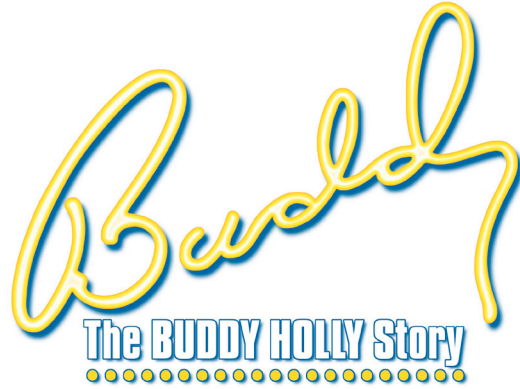
MARKETING

Marketing Manager **Olivia Semsel**
Marketing Assistant **Ed Bauso**

Pink = Full Time Staff Member

Brett Smock
Producing Artistic Director

The Rev Theatre Company
by Arrangement with Alan Janes
Present:



Written by ALAN JANES

Scenic Designer
Adam Koch†

Costume Designer
Tiffany Howard

Lighting Designer
Jose Santiago

Sound Designer
Kevin Heard†

Associate Director/Choreographer
Anthony Raimondi

Wig Designer
Alfonso Annotto

Associate Scenic Designer
Steven Royal

Production Stage Manager
Nolan Todd

Musical Direction by **ETHAN ANDERSEN**

Directed/Choreographed by **RICHARD J. HINDS****

buddythemusical.com

**Member of Stage Directors and Choreographers Society
† Member of United Scenic Artists, Local USA 829

CAST

(in alphabetical order)

Chris Agar	Joe
Mike Brennan	Big Bopper
Geno Carr	Norman Petty
Rob Clove	Tyrone
Tim Fuchs	Hipockets
Louis Jannuzzi III	Niki
Kara Mikula	Vi Petty
Isabel Rodriguez	Maria Elena
Antonio Rodriguez	Ritchie Valens
Alec Michael Ryan	Buddy Holly
Crystal Sha'nae	Marlena
Jonmichael Tarleton	Jerry

ADDITIONAL PRODUCTION TEAM

Assistant Stage Manager - Beau Lettieri
 Stage Management Intern - Sydnei Williams



Merry-Go-Round Playhouse is a professional theatre employing members of the American Federation of Musicians.



Merry-Go-Round Playhouse is a professional theatre employing members of United Scenic Artists, Local USA 829, a union of Designers, Artists and Craftspeople in the United States.



The Director-Choreographer is a member of the **STAGE DIRECTORS AND CHOREOGRAPHERS SOCIETY**, a national theatrical labor union.



Council on the Arts

Made possible by the New York State Council on the Arts with the support of Governor Andrew M. Cuomo and the New York State Legislature.

MUSICAL NUMBERS — ACT I

Scene 1: Onstage at the Grand Bowl, Lubbock, Texas

Rose of Texas..... Hayriders
 Ready Teddy..... Buddy and the Crickets

Scene 2: Decca Recording Studios, Nashville, Tennessee

That'll Be the Day Buddy and the Crickets

Scene 3: KDAV Radio Studio, Lubbock, Texas

Scene 4: Norvajak Studios, Clovis, New Mexico

Blue Days Black Nights..... Buddy and the Crickets
 Ollie Vee..... Buddy and the Crickets
 Everyday..... Buddy and the Crickets

Scene 5: That'll Be the Day Release

Scene 6: Onstage - Apollo Theatre, Harlem, New York

Shout..... Marlena, Apollo Performers

Scene 7: Backstage at the Apollo Theatre

Scene 8: Onstage - Apollo Frontcloth / Concert

Not Fade Away Buddy and the Crickets
 Peggy Sue..... Buddy and the Crickets
 Words of Love..... Buddy and the Crickets
 Oh Boy Buddy and the Crickets, Tyrone

MUSICAL NUMBERS — ACT II

Scene 1: Music Publisher’s Office - New York

Scene 2: Norvajak Studios, Clovis, New Mexico

Think It Over Buddy and the Crickets

Scene 3: New York Apartment

True Love Ways Buddy

Scene 4: Backstage at the Surf Ballroom, Clear Lake, Iowa

Scene 5: Onstage, the Surf Ballroom

America the Beautiful Mary Lou

Why Do Fools Fall In Love MC and the Snowbirds

Scene 6: The Clear Lake Concert

Chantilly Lace..... Big Bopper

Maybe Baby Buddy

Peggy Sue Got Married Buddy

Heartbeat..... Buddy

La Bamba Ritchie Valens, Buddy, Big Bopper

Raining In My Heart..... Buddy

It Doesn’t Matter Anymore..... Buddy

Rave On Buddy, Ritchie Valens, Big Bopper

Johnny B Goode..... The Company

Oh Boy Encore..... Buddy, Ensemble

WHO'S WHO IN BUDDY

(in alphabetical order)



Chris Agar (Joe) is a NYC-based bassist and producer with roots in Metro Detroit. Although formally trained in the jazz idiom, Chris' skillful musicianship & collaborative approach have allowed him to forge artistic relationships spanning multiple genres. He's produced/participated in a number of independent artists' records & is actively involved in theatrical productions.



Mike Brennan (Big Bopper) is beyond thrilled to return to The Rev after being a member of The Rev on Tour for several seasons! He is no stranger to *Buddy* having portrayed the Big Bopper in over a dozen productions including performances at Cortland Rep, Palace Theatre, Maples Repertory Theatre, Laguna Playhouse, Prather Productions, & two U.S. national tours. Other favorite credits: *The Wizard of Oz* (The Wizard/Professor Marvel), *Show Boat* (Captain Andy), *Disney's Beauty and the Beast* (Beast), *Annie* (Warbucks) and *The Producers* (Franz). Mike would like to thank Brett, the cast & crew, and his family & friends for their endless support. IG: @MikeBrennanJr

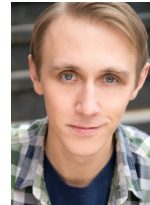


Geno Carr (Norman Petty) is thrilled to be back on the RevStage, having been in 17 productions including *The Producers*, *Forever Plaid*, *Peter Pan*, *The Full Monty*, *Thoroughly Modern Millie*, & *South Pacific*. Most recently, Geno created the role of Oz & Others in the Tony Award-winning musical *Come From Away* on Broadway, performing the role over 1200 times. Favorite credits: *Bush Wars* (Off-Broadway); Nat'l Tours of *Buddy*, *Phantom*; *Grease*; *Allegiance* & *Dr. Seuss' How the Grinch Stole Christmas* at The Old Globe; *The Foreigner* at Lamb's Players Theatre; *Assassins* at Cynet Theatre; *Next to Normal*

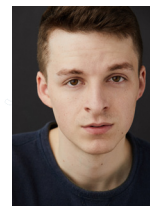
at San Diego Musical Theatre; *City of Angels* at Heritage Theatre Festival. MFA, Acting/Directing, Sarah Lawrence College; Dual BA, Music/Theatre Arts, Hartwick College. All my love to Nancy & Elliott. GenoCarr.com.



Rob Clove (Tyrone) is an actor, songwriter, & musician in New York City. A graduate from UNC School of Arts and St. John's University, he recently portrayed Jimmy Campbell in the 1st Nat'l Tour of the Tony-winning musical *Bandstand* (Andy Blankenbuehler). After the release of his original song "Little Black Boy" & opening for Grammy nominated rapper Nas, Rob was featured in *Jazziz Magazine*, & Sony-distributed album "Made in Amerika". @robclove



Tim Fuchs (Hipockets) Nat'l Tour: *Something Rotten* (Ensemble/US Nigel) *42nd Street* (Swing). Cruise Ship: *CATS* (Mungojerrie) Regional: *The Royal Family of Broadway* at Barrington Stage; *An American In Paris* and *A Chorus Line* at Westchester Broadway; *Newsies* at PCPA; *Crazy For You*, *Oklahoma*, and *Mary Poppins* at The Rev; From Ithaca, NY. Love to all family and friends who support him, Sierra. SUNY Cortland alum. Daniel Hoff Agency. timfuchs282.com IG: @timfuchsphotography.



Louis Jannuzzi III (Niki) is an actor/singer/musician hailing from Hillsborough, NJ. 1st Nat'l Tour: *Bandstand*. Regional: *The Fantasticks*, *Les Mis*, *Fiddler*, *The Producers*, *Julius Caesar*, *Evita*. TV: Gatorade's "Football, Texas" (costar with Academy Award nom. Eric Roberts), ID's "Evil Lives Here", NBC's "Rise." B.A. DeSales University. Many thanks to all involved in making this production possible. Prayers and immense gratitude to our frontline healthcare workers during this time. "La mia famiglia è nel mio cuore." LouisJannuzzi.com IG: @loujaczuzzi

WHO'S WHO IN BUDDY



Kara Mikula (Vi Petty) Off-Broadway: *The Cradle Will Rock* (Sister Mister/ Professor Trixie/ Pianist), *Allegro* (understudied 6 actor-musicians/performed Marjorie) at Classic Stage Co., both directed by John Doyle.

Nat'l Tours: Irving Berlin's *White Christmas* (Mrs. Snoring Man; understudied & performed Martha Watson), directed/choreographed by Randy Skinner. Developmental Work: *Les Belles* (Mlle. Rheauna Bibeau), directed by Sama Lapine; *Fancy – A New Musical*, directed/choreographed by Denis Jones. Regional: Actors Theatre of Louisville, Alabama Shakespeare Festival, Arizona Theatre Company, Bay Street Theater, KC Starlight, Ogunquit Playhouse, Paper Mill Playhouse, Pittsburgh CLO, Riverside Theatre. Kara is a COVID-19 survivor. Thanks to Eddie at Take3Talent. For my family. karamikula.com



Isabel Rodriguez (Maria Elena) is thrilled to be a part of *Buddy Holly!* Syracuse University BFA graduate. Syracuse Stage: *Native Gardens* (ensemble), SU Drama: *A Chorus Line* (Diana), *Romeo and Juliet* (Romeo). Thank you to

The Rev Theatre Company for allowing us to stay creative during these difficult times.



Antonio Rodriguez (Ritchie Valens) is pumped to make his Rev debut! Oklahoma native, University of Oklahoma grad. Past credits: *Footloose* at The Muny; *Rocky Horror, When We're Gone, Freaky Friday, Singin' In the*

Rain, Hello, Dolly! at Lyric Theatre OKC. Thanks to my family, the Brass Ring Studios, & God. @j_tonito

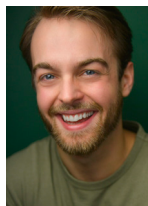


Alec Michael Ryan (Buddy Holly) is thrilled to be back at The Rev for this exciting production of one of his dream shows. As a guitarist, Buddy Holly tops the list of musical inspirations in Alec's life and career as an actor/

musician. It's a true honor to be telling Buddy's story, and in such an exciting medium. NYC/ Readings: *Harmony* at NYTF; Regional: *From Here to Eternity* at Ogunquit Playhouse; *Mamma Mia!*, *Ghost, Parade* at The Rev; *Grease, Catch Me If You Can* at New London Barn Playhouse. Love and gratitude to Ricky, Ethan, Brett, his agents at DGRW, and his dearest family. It is not lost on Alec how lucky he is to be creating theatre during a time in which our industry, and our world, is at a standstill. He'd like to dedicate this performance to artists everywhere.



Crystal Sha'nae (Marlena) is grateful to be back! Nat'l Tours: *Summer: The Donna Summer Musical*; Off-Broadway: *Dog Man The Musical*; Regional: *Nina Simone: Four Women* at Alabama Shakes; *Beehive, Parade, Best Little Whorehouse* at The Rev; TV: "The Blacklist," "Unforgettable". All Glory to God, and endless gratitude to Brett & my supportive family. Too Blessed To Be Stressed!



Jonmichael Tarleton (Jerry) is happy to be making his debut at The Rev with *Buddy!* Recently, he returned from the first nat'l tour of *Bandstand* in the role of Johnny Simpson. Other credits: Off-Broadway: *Freefall Frostbite*

(The Scholar). NYC: *Assassins* (Charles Guiteau), *One Summer Morning* (Joey), *Music Between Us* (Henry). Regional: *My Way* (Man 1), *Ragtime* (Father), *Jekyll and Hyde* (Gabriel John Utterson), *South Pacific* (The Professor), *Star Spangled Girl* (Andy Hobart). IG: @jktarleton

WHO'S WHO IN BUDDY

Ethan Andersen (Music Director) has been the music director and conductor for the *Saturday Night Fever* national tour, Flat Rock Playhouse (state theater of North Carolina), and Elon University's Music Theatre program. He's worked for *Mean Girls* on Broadway and conducted for BCEFA's Easter Bonnet Competition. Ethan is a member of the BMI Lehman Engel Musical Theatre Workshop, & his musicals have been produced by the New York Musical Festival, Elon University, annually at the Carl Sandburg Home National Historic Site, and on tour across North Carolina. Proud alumnus of Elon University & member of Local 802 AFM. ethan-andersen.com

Alfonso Annotto (Wig Designer) Broadway: *Wicked* with Idina Menzel, Kristin Chenoweth, Joel Grey & Megan Hilty, *Into The Woods* Revival with Vanessa Williams, *Victor/Victoria* with Julie Andrews, Liza Minelli & Racquel Welch, *Copenhagen*, *Spelling Bee*, *Putting It Together* with Carol Burnett and Kathy Lee Gifford, *My Favorite Year*, *The Phantom Of The Opera*, *Jerome Robbins Broadway*, *Les Mis*, *Miss Saigon*, *The Scarlet Pimpernel*, London: *Wicked* Design Assoc. Apollo Victoria Theatre, Off-Broadway: *Shout: The Mod Musical*, *I Will Come Back*, *Putting It Together* with Julie Andrews. For the Rev; *South Pacific*, *Parade*, *Grand Hotel*, *Grease*, *Beehive*, *Anne of Green Gables*, *Holiday Inn*, *Mamma Mia*, *Guys and Dolls*, *Best Little Whorehouse*, *Ghost*, *Treasure Island*, *Loch Ness*, assoc. *From Here To Eternity* (North American Premiere)

Kevin Heard (Sound Designer) is delighted to be back at the Rev. Previously for the Rev: *Grease*, *Ghost*, *Parade*, *From Here To Eternity*. Other sound design credits include: Broadway (Associate): *All The Way*, *The Cherry Orchard*, *The Country House*, *Sylvia*. Off-Broadway: *The Hello Girls*, *Midnight at The Never Get*, *Smokey Joe's Cafe*, *In & Of Itself*, *The View Upstairs*, *The Total Bent*, *Clinton The Musical*, *Long Story Short*, *The Underclassman*. Along with dozens of productions at regional theatres across the US, Kevin designed the sound for the International

Premieres of *Fun Home* (starring Lea Salonga), *Kinky Boots*, and *Matilda* in Manila, Philippines. Kevin also works as the Associate Producer for BenDeLaCreme Presents. HeardAudio.com
Richard J. Hinds (Director/Choreographer)** is thrilled to be returning to The Rev and to be able to connect with this incredible company. He previously directed and choreographed *Holiday Inn* and *Guys & Dolls*. On Broadway, Richard has worked on the recent revival of *Company*, *Come From Away*, Disney's *Newsies*, *Jekyll & Hyde* and *Il Divo: A Musical Affair*. He worked on David Byrne's production of *Here Lies Love* Off-Broadway as well as the National Tours of *High School Musical* and *9 to 5*. Richard's work has been seen on TV in Disney+'s "Encore!," Macy's Thanksgiving Day Parade, "America's Got Talent," and Lifetime's "Bring It". Instagram: @richardjhinds
Tiffany Howard (Costume Designer) is elated to be in her 12th season at The Rev! After receiving her MFA from Texas Tech University and then teaching college for 5 years in Missouri, Tiffany found a happy home here in both the summer and Education shops where we take on the task of teaching a new generation about the power of theatre. You may have seen some of her work in recent seasons, including *Working*, *South Pacific*, *Grand Hotel*, *Grease*, *Beehive!*, *Holiday Inn*, *Mamma Mia!*, *Guys & Dolls*, *Parade*, *Best Little Whorehouse...*, & *Crazy for You*. Favorite designs from past seasons: *Always... Patsy Cline*; *Oklahoma!*; *West Side Story*; *Lost Highway*, *The Hank Williams Story*; *The Marvelous Wonderettes*; & *Cabaret*. Thank you to the amazing Costume Shop for all the work and laughter—and for making such good looking shows in such a short amount of time! And a huge shout out to the Wardrobe Team (lead by Ashley Wilson) who makes miracles happen every day! Couldn't do this without all of you! As always, a huge thank you and all my love to Geoff Howard – the best darn husband a girl could ask for.

WHO'S WHO IN BUDDY

Adam Koch (Scenic Designer) Rev debut. Credits across the United States include productions at The Old Globe, Ford's Theatre, Goodspeed Musicals, Westport Country Playhouse, The Repertory Theatre of St. Louis, Paper Mill Playhouse, Baltimore Center Stage, Cincinnati Playhouse, Tuacahn Center for the Arts, Great Lakes Theatre, Lyric Theatre of Oklahoma, Ogunquit Playhouse, Syracuse Stage, Music Theatre Wichita, and Portland Stage. Multiple Off-Broadway and International productions. Education: Carnegie Mellon University. For the past seven years Mr. Koch along with Steven Royal have worked jointly providing integrated scenery and video designs as Adam Koch Associates. see more at adamkochassociates.com | IG: [@instadamkoch](https://www.instagram.com/@instadamkoch).

Anthony Raimondi (Associate Director/Choreographer) is an actor, director and choreographer based in New York City. He has performed with the company of Giordano Jazz Dance Chicago, both the National & International tours of *West Side Story* and most recently, television shows like the Emmy Award winning series "The Marvelous Mrs. Maisel." As a director/choreographer, Anthony has been a part of creating many large scale productions including *Nick Jr. Live*, *Newsies*, and *West Side Story*. He has also donated time to Broadway Cares Equity Fights Aids helping to create pieces for BCEFA's Easter Bonnet Competition & Broadway Bares. anthonyraimondi.com | IG: [@araimondi89](https://www.instagram.com/@araimondi89)

Steven Royal (Associate Scenic Designer) has collaborated internationally with Adam Koch on over 150 musicals, plays and live events including the acclaimed productions of *Dreamgirls* in Seoul; *Titanic the Musical* at Serenbe Playhouse; and *West Side Story* at Maltz Jupiter Theatre. Other design credits include: *Gross Indecency* (Directed by Moises Kaufman), *Broadway Bares* (Directed by Jerry Mitchell) and *Lincoln Center Originals* (Directed by Lonny Price). Steven is the recipient of the Helen Hayes Award for Outstanding Director of

a Musical for *Bat Boy: The Musical* in Washington, D.C. More online at: adamkochassociates.com

Jose Santiago (Lighting Designer) is happy to be returning to The Rev for his ninth show here. Past designs include: *Working*, *Grease*, *Parade*, *Holiday Inn*, *Mamma Mia!* at The Rev; *Mamma Mia!*, *Peter Pan*, *Spamalot*, *Evita*, *Hairspray* at NSMT; *Rent*, *Anything Goes*, R+H's *Cinderella*, *Sister Act*, *Young Frankenstein*, *White Christmas* at Gateway; *Of Mice and Men* at Bay Street Theatre; *Man of La Mancha*, *La Cage aux Folles*, *Crazy for You* at The Wick Theatre; *Shrek*, *The Hunchback of Notre Dame*, *Matilda* at 5 Star Theatricals. He received his Master of Fine Arts in Lighting Design from Florida State University. jsantiagodesign.com

Nolan Todd (Stage Manager) is grateful to return to The Rev for his fourth consecutive season. New York: *Untitled "Hee Haw" Musical*, *The Flick*, *Così fan tutte*, *In The Blood*. Regional: *South Pacific*, *Grease*, *Anne of Green Gables*, *Best Little Whorehouse...*, *Guys and Dolls*. Nolan recently finished up an apprenticeship at The Juilliard School. Proud member of EMC & The Stage Managers' Association. Love & thanks to Regan, Momma, Dad & Brandon. nolantodd.com



Enjoy a great performance here tonight.

Enjoy a great performance with us everyday.

We are proud supporters of theatre in our community.

Thank you for all the amazing performances.

You move us, inspire us, transport us. Thank you for adding so much magic to our lives.

TOMPKINS 
Trust Company | Insurance Agencies
Financial Advisors

TompkinsTrust.com | TompkinsIns.com | TompkinsFinancialAdvisors.com

STAR

IN YOUR OWN VACATION



Photo courtesy of the Inns of Aurora



Photo credit Michelle Kisley

For a FREE visitor's guide to Cayuga County call 800-499-9615 or visit tourcayuga.com

TOUR **CAYUGA** .com
in the FINGER LAKES

18 33

KITCHEN
& BAR



1833KITCHEN.COM

the INNS of AURORA

auburn *Live*



...Connecting Our Community
in the 2020/21 Season & Beyond

AUBURNPUBLICTHEATER.ORG
8 Exchange St. | Downtown Auburn

Rose Hill Mansion Johnston House

A 19th-Century Farm Estate
Open May to October for Guided Tours * Geneva, NY
www.genevahistoricalsociety.com
315-789-5151



*Fine Wines. Family Farms.
Taste the Tradition.*

WHITE BIRCH VINEYARDS
PROUD SPONSOR OF THE

The Rev Theatre Company

Have a glass of Finger Lakes wine during the streaming performances. Purchase online and have delivered right to your front door.
www.whitebirchvineyards.com





LODGING AND
ACCOMMODATIONS
FOR VACATIONS
AND GETAWAYS IN
THE FINGER LAKES
REGION OF
NEW YORK.

INNATTHEFINGERLAKES.COM

(315) 253-5000

FRONTDESK@INNATTHEFINGERLAKES.COM



Lasca's

RESTAURANT & CARRYOUT

Hours:
Tues-Thurs 5:00-9:00pm,
Fri & Sat 5:00-9:30pm, Closed Sun-Mon

Providing the Auburn area with the best in fine dining since 1987.
From fresh seafood, veal and chicken to steaks and chops,
Lasca's provides sit-down dining that can't be beat.
Voted best Restaurant of the region last 15 years by locals!



Reservations: 315-253-4885

Carry Out: 315-253-6900

252 Grant Avenue, Auburn

www.lascas.com

- SEASONAL OUTDOOR DINING
- GIFT CERTIFICATES AVAILABLE



Midstate Mutual Insurance Company

Auburn, NY

Trusted by family and neighbors since 1879.

Personal Business Farm



Find your Midstate Agent at
www.MidstateMutual.com

UPSTATE
CANCER CENTER

AT



**AUBURN
COMMUNITY
HOSPITAL**

**AT AUBURN COMMUNITY HOSPITAL, WE HAVE
FOUND MORE WAYS TO SPECIALIZE IN YOU.**

We are partnering with Upstate Cancer Center to provide cancer care in the comfort of our community.

Our new cancer center at Auburn Community Hospital is ready to provide individualized treatment options from some of the brightest experts in the country. Every care plan ensures the comfort and convenience for patients and families.

Call 315-253-1818 to schedule an appointment.
Open Monday-Friday 8:30am-4:30pm.

YOU CAN ALSO VISIT OUR WEBSITE AT:

auburnhospital.org/cancercare



**JE ELECTRICAL
& CONTRACTORS**

2116 Ellis Drive

PO Box 624

Auburn, NY 13021

Commercial & Industrial Wiring

Phone – 315 252 6430

Fax – 315 253 0787



HANGAR THEATRE COMPANY

PARTNERING IN FLIGHT
 Cayuga RADIO STATION

PARTNER IN THE ARTS

Sense and Sensibility

By
Kate Hamill

Based on the novel by
Jane Austen
Directed by
Shirley Serotsky

Virtual streaming event
Saturday, August 8 @ 7:30 PM EST

www.hangartheatre.org/sense
(607)273-ARTS

THANK YOU!

You make all of this possible! Become a part of the Rev Family: Go to TheRevTheatre.com and click on "Support" for more information!

CORPORATE AND FOUNDATION DONORS

Executive Circle (\$100,000+)

Fred L. Emerson Foundation, Inc.

Founder's Circle (\$25,000-99,999)

Allyn Family Foundation

Central New York Community Foundation

Leadership Gifts (\$10,000-24,999)

Guido & Ellen Palma Foundation

New York State Council on the Arts

Stanley W. Metcalf Foundation

Richard S. Shineman Foundation
TRIAD Foundation

Producer's Circle (\$3,000-9,999)

The Jim & Juli Boeheim Foundation

Columbian Foundation

D.E. French Foundation

John P. & Elizabeth Y. McKinnell Family Foundation

Mitchell & Louis Shulman Charitable Trust

The Richard Mather Trust

The John Ben Snow Foundation

Pacesetters (\$1,000-2,999)

Kiwanis Club of Auburn

Cayuga County DFY

Benefactors (\$100-999)

Skaneateles Area Arts Council

CORPORATE SPONSORS

M & T Bank - Season Sponsor

Generations Bank - PITCH Sponsor

CFCU Community Credit Union - Executive Sponsor

Lyons National Bank -

Director Sponsor

Tompkins Trust Company -

Producer Sponsor

NUCOR

Jacobs Press

BUSINESS PARTNERS

Silver \$2,500

Boyle & Anderson

Cayuga Lake National Bank

Midstate Mutual Insurance

INDIVIDUAL DONORS

Featured Player \$2,500 - 4,999

John & Connie Bouck

Barbara & Jack Lewis

Ron & Becky Munn

Roberta Williams,
President of WHMB, PC

Leading Role \$1,000 - 2,499

William Abdallah

Jeanne M Beecher

Cathy Benson

Menzo & Sue Case

Patrick Carbonaro

Matthew Chalanick

Martha Conboy

Kyle Cool & Party

The Rev. Dr. James & Nancy Corl

Donna & Bill Davis

Peggy Dickman

Nancy Walsh Edwards

Larry & Karen Epstein

Judy Foresman

Dr. Art & Joanne Foresman

Dick & Judy Freeman

Mrs. Diana Gagliostro

David & Helene Gallagher

Susie Gaynes

Pamela Heleen

Frank & Jeannie Henderson

Robert & M Jane Herman

Alice Houser

Chelsea Janke

Logan Park Lofts

Angela Winfield & Lance Lyons

John P & Elizabeth Y McKinnell

Andrew & Sherie Ramsgard

William Dorr & Janet Scarbrough

Christie Schwab

David Tehan

Kelly Wejko

Maggie & Jim Wells

Aristotle Williams

Carl & Kristy Weber

Supporting Actor \$500 - 999

In Memory of Angela Rowley - On
Behalf of the Rowley Children

Joe & Maureen

John & Shirley Barber

John & Mary Bartholomew

Dorothy Booher

Bob & Linda Bower

Mary Jo & Jerry Bower

Nancy Bunn

Jim & Debbie Chase

Don & Pat Cleaver

Gary & Janet Cuthbert

Brad & Holly Davidson

Merrellyn Foote

Beatrice Franklin

Alex & Donna Giambartolomei

Deana Geaslen

Loretta Heimbruch

Barbara Heistman

Dan & Sharon Johnson

John & Nancy Karpinski

Raymond A. Lander, Jr

Mary McDonald

Mr. & Mrs. Gardner H McLean

Emily & Joe Metz

Elaine Meyers

Dr. Randy & Lisa Mitchell

L. Janet Morse

Bob & Madeleine Nethercott

Emma Power

Jane A. Reid

David Restey

Mary Robertson

David F. Gwynn & Vivian Sciarabba

Rick & Anita Slagle

Rick & Penny Stoker

Frank & Rose Swiskey

Nolan Todd

David D Wood

Invest in what you love!

Cameo \$300 - 499

In Memory of Polly Hutchinson

In Loving Memory of Vince &

Dorothy Klein

Ben & Sue Ahner

Linda & Nick Albicelli

Donald Anguish

Susan Ayers

Patricia Ball

Jane Banuski

Ann Barron

Fred Belcher

Mickey Belosi

Julie Bourke

Michael Brady

Beverly Buck

Tracy Buys

Jeff & Nancy Calkins

Celeste Carmichael

Beverly J Clark

Don & Jean Clark

G. Alan Clugston

Ron & Kathy Colella

Mr. & Mrs. John D Connors

Gwynne & Harrison Cordova

Philomena Corsi

Sue Dec

Maryann DeMasi

Judy Doyle

Bonnie Dunn

Karen Eggleston

Victoria Farkas

John & Mary Farrell

Mary & Mark Fishlock

Lynn Frizelle

Joan R Hass

Mr. & Mrs. David R Heath

Mary Ellen Hennigan

Patricia Henry

David Herlan

Maureen Hier

George & Carolyn Hiza

Bonnie & Wayne Hoskins

Marleen Hubbs

Frank & Kathy Jerome
 Edward & Susan Judge
 Elisa Keating
 Mr. and Mrs. George Kerstetter
 Thomas King
 Kenneth Kishtok
 Donald & Barbara Klem
 Richard & Barbara Knaul
 Lynnette Lee
 Skip Lehman
 Guy & Dawn Mackenzie
 Tom Maye
 Neal & Doreen McLane
 Mr. and Mrs. Dan McLaughlin
 Gail Mitchel
 Ellen & Marty Nodzo
 Catherine Noble
 David Kapell
 Pauline Ofsowitz
 Cal & Joan Organ
 Ray & Sally Paleczny
 Michael & Michelle Paparo
 Dave Parker
 William Pine
 Sandy Podulka
 Ken & Beulah Pollard
 Lucinda Porter
 Francis Quirk
 Richard Redmond
 Barbara Resseguie
 Chuck & Sally Reutlinger
 Jan Rybinski
 Dorothy Sarvay
 Bonnie Scolaro
 Donald Siegel
 Jim Spadafore
 Pam Stewart
 The Stull Family
 Vincent & Josephine Valicenti
 Phil & Jane Thorick
 Sam & Linda Vitale
 Mike & Marcia Walsh
 David & Dawn Wayne
 Louise B Wilson
 Bill Whiting
 Mr. & Mrs. Steffen Wolff
 Mr. & Mrs. Stuart Wood
Chorus \$150 - 299
 Anonymous (8)
 Norma Charles In Memory of
 David Charles
 In Memory of Dorothy Doeblor

In Memory of Seymour Volinsky
 Dr. Jomarie Alano
 Gino & Maxine Alberici
 Mr. and Mrs. Michael Anna
 Linda Arcangeli
 Kenneth Arnold
 Donna Arpino
 Steve Auyer
 Reverend W. Gary Baker
 Mary Ann Baner
 Leslie Banuski
 Norman & Nancy Barnett
 Janice Bartlett
 AnnaMae Bateman
 Grace Bates
 Ann Bauso
 Richard & Phyllis Beal
 Steve & Liz Becht
 Kathy Becker
 Mr. & Mrs. Richard Beebe
 Beverly Benassi
 Tom & Sue Beresford
 Donald Besig
 Frank Bickel
 Marcia & John Bishop
 Cheryl Bonetti
 Sharon Bower
 Mary Bowes
 David, Beth, & Amanda Bowman
 Margaret Brackley
 Don & Linda Brandstetter
 Nancy Brass
 Bonnie Bratt
 Mr. & Mrs. James Brayer
 Robin Braunstein
 Mary Bresnan
 Jeri Vargo & Anne Brodie
 Sheryl Brown
 Kermit Buckman
 Ronald Buckman
 Grace Burrirt
 Jean Cadwallader
 Sally Cafalone
 Christina Calarco
 Ray & Barb Cali
 Norma Calkins
 Pat Callahan
 Karen Camp
 Michael Carbary
 Enid Cardinal & Peter Dunham
 Sally Carmer
 George & Tracey Carruth

Peter Cashin
 Joyce Chamberlain
 Gary Chapin
 Kathy & Jim Chase
 Linda Chow
 Joseph Clare
 Alton Clark
 Bette Cleere
 Michael Colabufo
 Kenneth Colegrove
 Don & Barb Coleman
 David & Fay Connelly
 Angelo Coppola
 Tony & Mary Anne Corasaniti
 Laurie Cornwell
 Sue Covington
 Joyce Cowell
 Dana Coye
 Diana Coyne
 Jane D. Crosby
 Jacqueline Cross
 Sharon Crowley
 Karen Cummings
 Daphne Cunningham
 Joe Cutri
 Roger Dahlin
 Viola Darling
 Lynn Davis
 Brian Deacon
 Betty DeFazio
 David DeFelice
 Ann DeShane
 Mr. & Mrs. J Deuble
 Barbara A Devine
 Lorelea Dewitt-Antilla
 Mr. & Mrs. Gary Dick
 Roger & Judy Dilmore
 Paul J Dolan
 Gillian Donaldson
 Virginia Drake
 Lloyd Dropkin
 Linda Dugan
 Eric Dumond
 Mary Ann Egan
 Joanne E Earley
 Grace H. Ellegate
 Helen Engel
 Mr. and Mrs. Ken Entenmann
 Glenn Fadner
 Peggy Fanning
 Neil & Lynn Farrar
 Anita Fenner

Richard & Jean Fenton
 Marcia Herrling Finch
 Mr. Clarence Fink
 Gerald & Donna Fisher
 Jean Flanigan
 Barbara Fleming
 Ronald Fletcher
 Dave & Joan Ford
 Bernard Forth
 Sharon Fox
 Nancy Frakes
 Andrea Fusco
 Marybeth Gaffney
 Ed & Marybeth Galka
 Dr. Deb Geer
 Susan Gibides
 Teresa & John Goeke
 Kerry Gorla & Cathy Thurston
 Timothy & Darlene Graham
 Bill & Renee Granato
 Lorraine Grande
 Gary & Annette Grant
 Marilyn & Bill Gray
 Linda M Greenfield
 Lori Guzewicz
 Sherri Guzylak
 Alice Irwin
 Robert Hagemann
 Shannon Hamer
 Jessie Harper
 Kelly & Tony Hart
 Weta Hayden
 Chad Hayden
 Dan Hays
 Patricia Heffron
 Joanne Helmer
 Steve & Marlo Herbert
 Annemary Herson
 Patty Hertz
 David Hewson
 Gary Heyer
 Judy Hileman
 Margaret Hill
 Peggy & Arnon Hill-Greif
 Nancy Hiscock
 Margaret Hoag
 Cathy Hogan
 Richard & Deborah Hole
 Norman & Brenda Holland
 Mary Horan
 Jesse Howell
 Jane Hubbs

Wayne & Anne Hulbert
 Mr. & Mrs. Ricardo Humerez
 Robert Hunt
 Sara Hunt
 Thomas Hunt
 Robert & Corliss Hunter
 Linda O. & John W. Jackson
 Raymond Jacobs
 Theodore & Roberta Johndrow
 Ed & Kris Jorolemon
 Mary & James Kahn
 Robert Kalweit
 Elisa Keating
 Helen M Kelley
 Marie Kelsey
 Virginia Kentner
 Uadajane Ketcham & Margo
 Denman
 Ray & Laura Kilmer
 Mr. and Mrs. Jeffrey King
 Joy Knopp
 Mr. and Mrs. Harold Knuutila
 Joanne & Bob Kolch
 Mary Ann Kolo
 Mr. and Mrs. Donald Kortkamp
 Kay Kraatz
 Darlene Kraemer
 Jack & Lynn Kreischer
 Kathleen Krell
 Mr. and Mrs. Daniel Kuhn
 Carol Lafferty
 Donna Lannon
 Norman Lasda
 Peggy Lattimore
 Paula & Gregg Lawson
 Larry Ledgerwood
 Julie Legg
 Beth & Larry Liberatore
 Lianne Liberatore
 Margaret & Paul Liberatore
 Deborah Lindfors
 Mary Littlejohn
 Elizabeth Logan
 Mr. John T. Long
 Mr. and Mrs. Francis Lowther
 Diane Lucey
 David Ludlow
 Patricia Lugert
 Mr. & Mrs. Jerry & Diane Macaluso
 Susie MacKecknie
 Ms. Nancy Marquardt
 Loretta Marx

Dr. Joseph Mather
 William Maxwell
 Bill & Cynthia McCauley
 Diana McKenna
 Deborah McLear
 Susan McLoughlin
 John McNeill
 Catherine Messenger
 William Metz
 Victoria Meyers
 Dick Milazzo
 Yael Miller
 Reverend William Michatek
 Gail P Mitchell
 Joanne & Joe Mitchell
 Chris "Blue Harp" Molloy
 Thomas Monti
 Mary Ellen Moochler
 Mary Frances Moran
 Susan Moran
 Lynn Morgan
 Michael Morris
 Virginia Moses
 Jane Mostow
 MaryAnn & Felix Mucedola
 Barb Murdoch
 Joanne Murdoch
 Joanne Murphy
 Nancy Nash
 Donna Nedrow
 Mary Nellenback
 George Nettleton
 Joanne Nicholson
 Betty Nolan
 T. Edward Nolan
 Mr. Michael Nye
 Michele L Nye
 Don & Eileen O'Connell
 Marianne O'Connor
 Gale O'Neill
 Judith & Edward O'Rourke
 Nancy Olp
 David Opp
 Lawrence & Anne Owens
 Michael Panek
 Lawrence Pardee
 Dale & Leah Parker
 Patricia Patriarco
 Robert Patterson
 Margaret Pawlyk
 Kim Peck
 David Penney

Nancy Pennypacker
Mrs. Kathryn Pepe
Lawrence Perkins
Lisa Pesce
Lois Peterson
Angela Petrus
Edward Plum
Mr. & Mrs. Robert Pohl
Kathleen Pollastro
Jean Poole
Daniel Powers
Andrea Price
Maria D Purcell
Teresa Querns
Michelle Rathbun
Diane Reichert
Emily Reid
Patrick & Anne Reilly
Teresa Resavy
Terry Rex
Anne Reynolds
Eileen Rice
Hannah Richter
Meta Riester
Buzz & Gretchen Roberts
Jon Robson
Mrs. Joanne Romano
John P. Ronan
Richard Rood
Ronald & Margaret Ross
David & Susan Rossi
John & Suzanne Rossi
Arnold Rubenstein
Chris Rusert
Franklin & Cynthia Russell
Beverly Ryan
Rosemarie A. Ryan
Jeri Sabo
Monika Salvage
Bob Salvetti
Sam & Susan Sammarco
Carole & Joseph Sarofeen
Colleen Saxton
John Saxton
Mr. & Mrs. Gary Sayer
Jim & Debra Scala
Bob Scarbrough
Sharon Scheiwiller
Helayne Schenck
Ruth Schermerhorn
John Schmitt
Charles Schwab

Norman & Sharon Scott
Marsha Senges
Linda Simkin
John & Sandra Sinton
Bonnie Sissenstein
Jean A Shafer
Carol C Shamon
Michael Shanley
Netti Shigley
Elizabeth Shockey
Therese Shook
James W. Shults
Sinclair of Skaneateles
Nikki Slater
Edith Smith
Kate Smith
Janet M Smyth
Janet T Smyth
Susan Souhan
John Spain
Joan Spang
Lew Springer
Donna Srnka
Maureen Stadelman
Annette Stevens
Linda Stevens
Mary Ann Stirling
Ed Sulewski
Richard & Patricia Swanson
Florence Swartz
Carol Tantillo
Rebecca Tarby
Tracy Tarby
Nancy Taylor
David Tehan
Janet Tenreiro
Carol Thau
Joan & John Thomas
Kathy Wilt & Betty Thomas
Lawrence Thomas
Bent Thomsen
Dr. & Mrs. James Tiff
Bob Titus
Lisa Tkacz
Elizabeth Ton
Ann Tobey
Bernie Tomasso
Susan Warburton & Elizabeth
Tracy
Michael & Molly Trapani
Sandra Travis
Dennis & Deborah Trepanier

Yoko Tsuji
Richard Tuxill
Jane & Bob Van Alstyne
Susan Van Riper
Glenn & Kathy Vogel
Earl & Jean Voorhees
Mike Wager
James Wassenaar
Sylvia Wasserman
Lauren & Steve Weber
Linda Westfall
Mr. & Mrs. Daniel Whitaker
Andy & Joyce White
Judith Whittle
Gary & Sandy Widger
Wallace Wiegert
Robert Wilcox
Holly Wilson
Richard & Marlene Winter
Barbara W Wise
Jean M Wiseman
Marianne G Dunn & Dr. Diane
Wonch
William & Mary Wormuth
Ann Wossner
Phil & Meg Yurco
Dennis Zach
Eric Zeltmann
Ziegler Family
Constance Zollo
Understudy \$50 - 149
Anonymous (13)
In Memory of Bernard Allen
Deb Geer - In Memory of Bill
Foresman
Helen & Anne Piroli - In Memory
of Dr. William H. Foresman
Chuck & Sally Reutlinger - In
Memory of Dr. Bill Foresman
In Memory of Anthony Guidone -
Sandra Guidone
In Memory of Dick Hunter
In Memory of John A. Lewkowicz
In Memory of Christine Lightcap
In Memory of Angela Rowley
In Honor of Marvin Stewart
In Memory of Leonard, Ruth, &
Preston Thomas
Sam, Lisa, Bianca, & Dommie
Vanda Albera
William Allyn
Dolores Anderson

Jan Argentine
Steve Arnold
Nancy Aumann
Cheryl & Stephen Austin
Therese Baier
Edward Bailey
Ann Balducci
F. J. & Vivian Balistreri
Carol Ball
Rosanne Barbaglia
Joyce Barnett
Roxanna E Barnum
Mr. & Mrs. William Barth
Rosanne Beach
Mary H Beardsley
Edward Benderski
Carole Bennett
Jodie Bennett
Chandler Benson
MaKenna Benson
Marianne & Raymond Berman
HB & Donna Besaw
Mr. & Mrs. James C Best
Mr. Lewis Bianchi
Patricia Bianconi
Jane & Donald Blake
Carlton & Barbara Blanchard
Orville A. Boden, Jr.
Judy & Richard Boedicker
Barbara Bok
Kim Borden
Sally A Botelho
David & Elaine Boull
Mary Bradly
Jim & Martha Bradshaw
Dan & Donna Breen
Paul & Rosalie Brennan
Evelyn Brenzel
Karen Brizendine
Kathy Brock
Margaret Brooks
Hal & Peggy Brown
Janet Brown
Jim & Nora Brown
Robin Bryant
Johanna Bucien
Kathryn Budd
Cindy Bunnell
Jan Burnap
Richard Byndas
Margaret Calder
Doug & Joan Cameron

Linda Campbell
Steven Canale
Dr. & Mrs. Daniel Cannucciari
Beth Capizzi
Marian Carfagno
Marybeth Carlberg
Linda Carr
Carolyn Case
Molly Case
Addie Castaldo
Jan Caster
Norma & Lynn Cayward
Elizabeth Chandler
Dr. Brian & Mary Daye Changlai
Tim Chiavara
Patti & Gene Chilion
Ellen Clark
Joyce Clark
Jeannette Clause
Michael & Sharon Colabufo
Marie & Larry Cobado
Bradley Cole
William & Martha Cole
Gary Colella
Toni Colella
Elizabeth Coleman & Patricia
Gregory
Sharon L Coleman
Trisha Collier
Joanne Condron
Chele Conley
Heidi Connolly
Teri Connor
Pam Cosser
Alma Cotes
Jean Cottrell
Bonnie Cronk
Nancy Crawford
Mr. & Mrs. Tom Cuff
Marilyn Joy Cupido
Ms. Sheila D'Agostino
Susan Dailey
Eileen Daloia
Deborah Darling
Andrea Dahl
Judy Davis
Linda Davis
Denise Deapo
Fran Decker
Ellen DelloStritto
Sue Deluca
Jeanne Denti
Wayne Dentino

Joe & Carol DePierro
Eileen Deuell
Carol Devaney
Julie Dibagio
Craig Dickhaus
Diane & Michael Dolcemascolo
Candace Dominick
Rod & Betsy Donald
Linda Douglas
Beth Drew
Patricia Drummey
Robin Dudden
Margaret Dushatinski
Carol Dyer
Christine Edinger
Laurie Elliot
Lorrie Emerson
Elizabeth Etoll
Linda Eygnor
Kay & John Falcone
Mr. Thomas Falicchio
Gerald Ferro
Dave & Helaine Feikert
Dave Feldman
Sally Fellows
Mark & Susan Field
Cathy Finley
Alan & Ellen Fish
Richard & Dona Flaherty
Christine Fluke
Gary Foley
Bonnie Ford
Cynthia Fowler
Virginia Fowler
Melissa Frendak
Diane Frey
Jo Ann Fuller
Susan Furst
Sherry Gabak
Walter Gable
Patricia Gacioch
Robert Gage
Sue & Bob Gage
Ms. Patricia Gallagher
Toni Gallagher
Mary Ann Gambitta
Mr. and Mrs. Steven Garner
Brian Garrett
Gail Garropy
David Garvey
Marj Gavin
Linda & Anthony Gero

Susan Gewinner
 Lisa Giannone
 Jackie Giannotta
 Susan Gilmore
 Peg Ginnis
 William Goertemoeller
 George Goldberg
 Richard Golden
 Linda Goodness
 Kathleen Graber
 Carol Graham
 Kathy & John Graham
 Jennifer Gray
 Marilyn Gray
 Janice Greco
 JoAnn Greco
 Richard Green
 Eunice Greene
 Mr. and Mrs. Ed Gremli
 Suzette Grinnals
 Patty Grinnell
 Carolyn Guariglia
 Amy Gulliver
 Kathleen Gutberlet
 Stan & Chris Gutelius
 Nikki Guzalak
 Kerry Haber
 Jack & Karen Haggerty
 Lamont Hahn
 Janet & Richard Haines
 Sylvia Hall
 Fred & Lynda Hamberger
 Leslie Hamilton
 Roberta Hampson
 Beverley Hancox
 Kathy Harding
 Joanne Harland
 Charlotte Harvey
 Pam Head
 Marie Heck
 Barbara Herrmann
 Jeanne Herst
 Joni & Bob Henderson
 Roger Hiemstra
 Antonia Hirtler
 Robert & Alice Hoatland
 Sara Hoffee
 Patrica Hofsommer
 Judy Hogan
 Rose Hogan
 Mary Honcharik
 Tom Hooker

Clyde Howard
 Renee Huband
 Linda Hudson
 Dorothy Humm
 Nancy Hyatt
 David Ingram
 Mona & Al Jackson
 Nora James
 Millie & Nelson Jameson
 Jan Jenner
 Robb & Lin Jetty
 Barbara Johnson
 Amy Jorolemon
 Ed & Linda Kabelac
 Courtney Kasper
 Mary J Keady
 Phyllis & Jim Keeley
 Jack Keiser
 Deborah Kelly
 Norma Kemp
 James & Mary Kennedy
 Carol B. Kenny
 Theresa Kline
 Suzanne Klink
 Mr. and Mrs. Joan & Ken Knight
 Valerie Koll
 Michele Kolodij
 Wendy Kopley
 Vickie Krul
 Mr. and Mrs. Kevin Krystofik
 Ann Kubarek
 Vincent LaFratta
 Lynda Langley
 Frank Lattimore
 Kurt Lavin & Marilyn Durbin-Lavin
 Joyce Lawless
 Lois Laxton
 Mary Layo
 Diane Lehner
 Joann Lenweaver
 Barbara Lester
 Eileen Lewis
 Patti & Gary Lewis
 Joyce & Tony Lobisco
 Mr. & Mrs. Anton Loewy
 William & Christine Long
 Jody Longeill
 Tara Lounsbury
 Neil & Janie Loveless
 Raymond Luber
 Mary Lyke
 Keith & Deborah Lyons

Twila MacDuffee
 James MacKillop
 Erin MacArthur
 Rose MacArthur
 JoAnn Mack-Wink
 Sharon & Jim Maher
 Doreen Mahunik
 Robert & Laureen Maiorano
 Lucille Mamorella
 Mary Manuel In Memory of Tom Manuel
 Bruce & Ellen Manwaring
 Mr. and Mrs. Paul Markley
 Gail May
 Carolyn McBride
 Mary McClenathan
 Julie McDowell
 Bill & Aloma McElwee
 Sandy McGovern
 Beverly McKay
 Elizabeth McLaughlin
 Charlotte & Stuart McLeod
 Ruth McLoughlin
 Betty Mae McMahan
 Irene McQueeney
 Joseph McSweeney
 Carole Menzel
 Patricia Messina
 Arnim H. Meyburg
 Laurie Michelman
 Judi Miladin
 Joseph Miles
 Robert S. Miller
 Doug Millis
 Anne Milne
 Charlene Mitchell
 Liz Mizro
 Ryan Moe
 Jan & Colin Monteith
 James Moore II
 Robert Moorhead
 Linda Moran
 Sheila Mourin
 Mark & Sandy Murray
 Ann Marie Nadge
 Kathy Nastasi
 Sylvia Neill
 Sally Neumann
 Richard & Janet Newman
 Barb Nichols
 Jeanne Nolan
 John & Josie Baccoli, MaryAnn
 Pembroke, Cindy Nolte

Courtney Norton
Lynn Notarpole
Maureen Nupp
Gary & Bonnie Nye
Christine & Charles Ockenfels
Bronwin O'Connor & Ted O'Hara
Norma Odell
Sally O'Herin
Barbara & Willis Osborn
John Paddock
Timothy Padlick
Bob & Ann Padula
Serene Palozzi
Janice Panasci
Michael & Joan Panek
Sandra Panek Scudder
Constance Patterson
Dick & Marie Paulino
Denise Pearsall
Marjorie Peech
Janice Pedersen
Terry & Sue Pensabene
Harriet Peters
Carole Pettigrass
Dr. Joseph Phillips
Sandy Pine
Marsha Pitcher
Mr. & Mrs. Polinsky
Elaine Poole
Maria Poplawski
Richard Portland
Sharon Powers
Mrs. James Preston
Judy Precious
Nancy & Al Prosser
Nancy Putman
Quality Care Carpet Cleaners
Susan Querns
Allen Quinlan
Amalie Quinn
Louis & Joan Ragonese
Nancy Randall
Mary Raymond
Alona H Redden
Judy Reed
Patricia Reeve
Ms. Cheryl Rehwinkle
Jeff Reichert
John & Dorothy Reiffenstein
Connie Reilley
Mary Ellen Reistrom
Marjo & David Reitsma

Jack Rejman
Joyce Rendano
Lorilyn Reynolds
Karen Rich
Ronald Richer
Louis & Barbara Rizzieri
Dan & Aggie Robert
Susan Roberts
Henry & Susan Rocholl III
Peter Rogers
Linda Rollinson
Frank & Arlene Romano
Cynthia Rooker
Valerie Rowe
Pat & Janet Rudney
Rebecca Rury
David Rusinko
Donna Sadowy
Arthur Samplaski
Maria San Jule
Dr. & Mrs. Americo J Santillo
Ron Sapio
Frank & Pauline Satterly
Barbara Sawyer
Beverly C Sayles
Kathy Scanlon
Patrice Scarcelli
George & Ellen Schaffer
Ms. Tobi Scheck
Carol Scheele
Judith A Schluter
Kim Schooley
Virginia H Schram
Tom Schuster
Carolyn Schwab
Richard Schwind
Bradley Scott
Paul Scozzari
Rose G. Seely
Donald Seitz
Mary Lou Sharpe
Sharon Shaw
Nora Sheldon
John & Lucy Shults
Cheri Sigmund
Patricia Sivers
Karen Skardinski
Lynda Skibitsky
Barbara Slenger
Ann Sloan
Nancy Sloan
Mr. & Mrs. Steve Slutya

Carol Smith
Jane E Smith
Joslyn Smith
Marilyn J Smith
Martha Howland Smith
Dr. C. Jane Snell
Patty Snyder
Nancy Soules
Kristl Spalding
Mary Ann Sparnon
Stacy Spaulding
David St. Amour
David & Helene Stapleton
Maria Starr
Pamela Stepien
Helen Stevens
Dick & Norma Stevenson
Jill Strand
Ann Streeter
Margaret Stroman
Sandra Sutor
Martha Sutter
James Sutton
Judy Swartwout
Richard Swinehart
Mary Jane Szczesniak
Martha Taffaro
Michael Tafler
Kayann Taylor
Nancy Taylor
Dr. & Mrs. Michael Tersegno
Virginia Testa
Sylvia Thayer
Michael Thornton
Angela Thurlow
Esther Thurston
Richard & Maureen Timian
Edeltraud Timmons
Mabel Townsend
Dr. & Mrs. Raymond Traver
April Tucker
Maureen Tyler
Don & Wendy Valentino
Paul Valentino
Marcia Valerino
Betsy Van Norstrand
Gary Van Norstrand
Judy Van Norstrand
Jule Van Sant
E Kathleen Van Wie
Pam Vitale
Sharon Vreeland

Linda Wagenet
 Sophia Wales
 Donnelle Walter
 Fran Walter
 Mr. & Mrs. Ellis D Ward
 Rosalie Ward
 John & Diane Wargo
 Diane Warren
 Bill Watkins
 Sharon Wells
 Beverly Wernet
 Barbara Wernham
 Fredrick & Sharon Westover
 David & Heather Wheat
 Ron & Jean Wheeler
 David White
 Carol Whitmore
 Mary Widger
 Lee Wigfield
 Stacie Wiggins
 Mary Willey
 Patricia Williams
 Ross Willink
 Leonard & Judy Wiltberger
 Bjorn Woldbeck
 James Wolfanger
 Barbara Woods Fethers
 Pat Woodworth
 Michael Wysocky
 Margot Yager
 Stephanie Young
 John Yurco
 Norene M Zegers
 M. Jane Zimmer
 Art & Shirley Zimmer
 Loretta Zolkowski

“BEST SEAT IN THE HOUSE” DONORS

B-101 Auburn Club of Zonta International
 B-102 Gloria M. Stootman, CPA
 B-103 Judy Freeman
 B-104 Dick Freeman
 B-105 In Memory of Elma Gable
 B-106 Sarah Applebee
 B-107 Dr. & Mrs. C. David Smith
 B-108 Brian Bauersfeld
 B-109 In Honor of Sister Walter Anne O’Malley,SSJ
 B-110 In Memory of Anna Riccobona

B-111 Auburn Service League, Inc. 1954-1998
 B-112 In Memory of Miss Camille Kruszynski
 B-113 “Miss K” from Her Students
 B-114 Stella Germano
 B-115 John & Teresa Goeke
 B-116 In Memory of Patricia Prudom
 C-101 John G. Rubino
 C-102 Dee Rubino
 C-103 Richard J. Zwirn
 C-104 In Memory of David Wakefield Corning
 C-105 In Memory of Alphonse & Frances Maiorano
 C-106 In Memory of Emilio & Rose Passaro
 C-107 Robert Sanders
 C-108 In Memory of Paul M. Landis
 C-109 In Memory of Earl & Ruth Grace
 C-110 Weedsport Community Theatre
 D-101 In Memory of Mr. & Mrs. Bernard J. Gaffney
 D-102 Viola Kraatz
 D-103 In Memory of Mom, Al & Bob Kraatz
 D-104 Mr. & Mrs. James J. Criazzo
 D-105 Donna M. Swan
 D-106 In Memory of J. Kraft Vorreuter
 D-107 Mr. & Mrs. Thomas Walsh, Jr.
 D-108 Thommie Walsh
 D-109 Richard Boni
 D-110 Kitty Boni
 D-111 Leigh Anne Boni
 D-112 Robert & Gillian Donaldson
 D-113 Richard & Ginger Burkhauser
 D-114 Emily N. Keiser
 D-115 Michele L. Keiser
 D-116 Tom & Patty Stopyra
 D-117 Wesley and Ruth Miller
 D-118 Enjoy The Moment! Mrs. Betty Conners
 D-119 In Honor of Barbara (Grace) Luke
 D-120 Gordon and Eunice Grace
 E-101 Linda Anne Rooker
 E-102 Toni Landau
 E-103 Mr. & Mrs. Vincent Klein
 E-104 George & Ann Jacobs
 E-105 John Baader
 E-106 In Memory of Edwin A. Riggs, Jr.
 E-107 Todd Lattimore

E-108 Pamela S. & Stephen A. Kirkwood
 E-109 Janet Scarbrough & Bill Dorr
 E-110 Grace C. Simmons
 E-111 The Auburn Players
 E-112 Carlton & Shirley West
 E-113 Richard & Ann Landers
 E-114 George & Jean Kerstetter
 E-115 Bill & Patty Lupien
 E-116 Alex & Mary Alice Lipski
 E-117 Irene B. Murphy
 E-118 In Memory of Phyllis Goldman
 E-119 William Goldman
 E-120 Ron Munn
 E-121 Becky Munn
 F-101 Adams & Son, Inc.
 F-102 Carmen & Anne Marie Cosentino
 F-103 Patricia A. Randall, MD
 F-104 In Memory of Gardner Kyle
 F-105 Mary Moore
 F-106 Katie Schimizzi
 F-107 Patsy Rogers
 F-108 Tom & Claudia Rogers
 F-109 Greg & Linda Szczepanski
 F-110 The Reutlingers
 F-111 Megan Dorr
 F-112 Bridget Dorr
 F-113 In Memory of Rick Farwick
 F-114 Doug’s Fish Fry-Skaneateles
 F-115 Sally & Ray Paleczny
 F-116 John & Shirly Barber
 F-117 In Memory of Carmel M. Malvaso
 G-101 Art Foresman
 G-102 Joanne Foresman
 G-103 Bob Foresman
 G-104 Charlie Beck
 G-105 Ellie Beck
 G106- In Honor of G Alan Clugston
 G-107 In Memory of Bonnie Mather
 G-108 Vincent Telesco
 G-109 In Memory of Agnes D. Swayne
 G-110 Mr. & Mrs. Francis Timian
 G-111 Emily Reutlinger
 G-112 Martha Reutlinger
 G-113 In Memory of Marian Prockup
 G-114 Doug & Clara Clark
 G-115 In Memory of Kenneth

Kupferberg
 G-116 ACC/CCC Alumni Association
 G-117 Connie Mazur
 H-1 In Memory of Anna Schonning
 H-2 In memory of William V. Emerson
 H-3 Happy Birthday T.D. LaClar 7/03
 H-4 Carolyn S. Emerson
 H-101 Harold M. Henderson - Man of Music
 H-102 Martha E. Henderson
 H-103 Mr. & Mrs. Robert L. Herman
 H-104 In Honor of Sherry S. Samuels
 H-105 In Memory of Frank L. DeFurio, MD
 H-106 In Memory of Josephine P. DeFurio
 H-107 Mrs. Alice B. Sherman
 H-108 Monroe Family
 H-109 Dr. Bruce Gutelius
 H-110 In Honor of Our Parents Port Byron HS Class of 2000
 H-111 In Memory of Darlene Denise Smith
 H-112 In Honor of Dr. Linda A. Townsend
 H-113 Julia Wagner
 H-114 Alex Kinal Wagner
 H-115 Ann McKeon
 H-116 Liz Van Der Woude
 H-117 Mrs. Curtis Smith
 I-1 In Memory of Evelyn P. Hoskins
 I-2 Kenneth Guy
 I-3 In Memory of Meredith "Pete" Grant
 I-4 June Guy
 I-5 Ed & Nancy Davis
 I-6 Honoring Virginia Porten. Love Gary, Lois, Gin, Chris
 I-101 Phil and Diane Windsor
 I-102 In Memory of Esther Kramer Reddrop
 I-103 In Memory of Myrle E. Lee
 I-104 In Memory of Susan B. Near
 I-105 In Memory of Robert C. Paddock
 I-106 In Memory of Sandra J. Paddock
 I-107 Gertrude Villhauer
 I-108 William E. Abdallah
 I-109 Margaret H. Abdallah
 I-110 In Memory of James F. Cavanaugh
 I-111 In Memory of W. J. Near, Jr
 I-112 In Loving Memory of Brian J. Hanley
 I-113 Happy 48th Ken & Beulah Pollard
 I-114 Frances Robb Bowman
 I-115 Joseph W. Pine
 I-116 In Honor of Edward Sayles
 I-117 In Memory of Beatrice A. Rindge
 J-1 In Honor of Allan Snider
 J-2 Esther Corey Riester
 J-3 In Honor of Elizabeth Snider
 J-4 Meta H. Riester
 J-5 Dr. Thomas Austin Clary
 J-6 In Memory Eleanor S Clark
 J-7 Barbara Ann Clary
 J- 8 In Loving Memory of Natalie Sears Clark
 J-101 In Memory of Natalie K. Keogan
 J-102 John & Barbara Petrosino
 J-103 In Memory of George & Martha Newell
 J-104 In Loving Memory of Thelma Vine
 J-105 Frederica & Julia Dudley
 J-107 In Memory of Vivian Hoskins
 J-108 In Memory of Bill Shigley
 J-109 In Loving Memory of Jane Slazer Kruger
 J-110 In Loving Memory of Larry Kruger
 J-111 Terry & Jack Hickey
 J-112 SIL
 J-113 Mary B. Giannino
 J-114 Edward N. Giannino
 J-115 Jeff Van Orman
 J-116 Marion & Mike Oropallo
 J-117 Robert & May Henderson
 K-1 Lee N. Shaw
 K-2 In Memory of John E. Bohall
 K-3 Corinne Shaw
 K-4 In Memory of Al King
 K-5 F. Eugene Riley
 K-7 Lois Vibbert Riley
 K-9 In Honor of Alice B. Sherman
 K-10 Honoring Laura W. Conley
 With Love, Your Children
 K-101 Charles Hurst
 K-102 Becky Hurst
 K-103 In Memory of Thom & Jane Sebastian
 K-104 James-Francis-Gallery, 3-24-35 Actor 2-5-01
 K-105 LeMoyné College, Boot & Buskin 1957
 K-106 Marvin Druger
 K-107 Patricia Druger
 K-108 KOZMO
 K-109 In Loving Memory of Anne Morrissey Burns
 K-110 Marsha K. Burns
 K-111 In Memory of Mildred Kinarty
 K-112 In Memory of Kelly Green Lipiska - Love Mom & Dad
 K-113 James "Dean" McNickol
 K 114 In Honor of Ed Sayles From the 2014 MGR Staff
 K-115 Beverly Wiggins
 K-116 G. John Wiggins
 K-117 Willis & Cynthia Watkins
 L-1 Dick & Barbara Wood, Love Never Ends
 L-2 In Memory of Richard Lepak
 L -3 In Honor of Joan Nill Howland - Martha Howland Smith
 L5- Stephen & Kay Kraatz
 L-11 In Memory of Franklin J. Sherman
 L-101 In Memory of Charles & Jane Strong
 L-102 In Memory of Monica Mochler
 L-103 In Memory of James J. Locastro
 L-104 Brenda & Larry Kayn
 L-105 David A. Stookey II, LHS "The Music Man" 2004
 L-106 In Loving Memory of Donald & Rosemary Lambert
 L-107 Beth Lattimore
 L-108 Sydney Lattimore
 L-109 Sean Lattimore Jr.
 L-110 Sean Lattimore
 L-111 Happy 40th Birthday, Sherie Ramsgard
 L-112 Jane & David Bates, Sept 4, 1956
 L-113 In Memory of Tony Donofrio from Clark & Mary Tucker

L-114 Stacy Blackburn Thank You
Aug 2, 2000
L-115 Susan Watkins Carter
L-116 Thomas Reese Watkins
L-117 Andy & Betty Walker
M-1 In Loving memory of
Catherine Sigona
M-2 Bob and Joan Haff
M-3 In Loving memory of
Kimberly A. Troisi-Paton
M-5 In Loving memory of Anne
Cerio
M-7 Nothing Remains without
Change – Lisa Sigona
M-9 In Loving Memory of Arlene
Butera
M-11 Loving Honor Cathy Troisi
“My Sissy, Love Lil’ Sis”
M-101 In Loving Memory of
Patricia Gwynn Taft
M-102 In Memory of Edie Binnert
M-103 Patty & Bob Hunter
M-104 Class of 1955 East High
M-105 In appreciation of Michael
R. Nye
M-106 In Memory of Carolyn Nye
M-107 In Memory of Mary L.
Thorpe
M-108 Auburn East High Class of 1960
M-109 Mattie & Glen Manuel
Ronald Lunkenheimer
M-110 In Memory of Carl & Betty
Zachman
M-111 Katharine W. Clugston,
Mother
M-112 Phil R. Clugston, Father
M-113 Kate T. Clugston, Aunt
M-114 Skip, Kim & Laurel Lehman
M-115 In Memory of Charles &
Isabelle Bacon
M-116 In memory of Fred P.
LePine
M-117 In Honor of Peg Bisgrove
N-1 In Memory of Joan
Vadeboncoeur
N-101 Ralph & Joy Getty
N-102 Chuck Savage so enjoyed
evenings of music here!
N-103 In Memory of Joan E.
Costello
N-104 In Memory of Brian N Vitale
N-105 Blanche Kent Durbin, with

love, your family
N-106 In Memory of Seth E. Durbin
N - 107 In Memory of Jane C. Orser
N-108 Elaine Stauss 1934-2011
N-109 Donna & Michael Glowacki From their
Family
N-111 Zinc & Jean La Douce
N-116 J S Klink 40th Ann., 8-30-09
N-117 Arthur J. & Ruth McQueeney, Donnelly Deo
Gratias 135
O-101 Robert T. Murdock
O-102 In Memory of Arthur Storch
O-117 I Believe, Carole L. Brown, O:NEN
P-1 Roots too strong to fall Parade 2017
P-101 Frank & Mary Pace
P-102 Phil & Mary Pace Cefaratti
P-117 From 1975 Marion Rogers and Sharon
Young Love MGR
Q-101 In memory of Howard P. Hartnett
S2- Mary A DeMasi
S-11 In Memory of George G. Souhan
S-101 In honor of Malcom Skipton & Deb Geer
T-2 Beverly Baker
T-4 Donald E. Whitman, III
T-1 David F. Gwynn
T-3 Vivian Sciarabba
U1- In Celebration of Ann Jerris
U-2 Bob Popyk, EHS Class of ‘58
U3 - Aquilina / Jerris Family
U-4 Don & Linda Brandstetter
V-1 In honor of Carolyn G. DeSantis
V-2 Tony V. Martino
V-4 Joyce T. Martino
V112- Best Friend, Lynnette Lee
V113- Best Friend, Sue Dec
W-101 Thank You Doxie Sherman
Our # 1 Volunteer Usher

“BEST SEAT IN THE HOUSE”

IS A GREAT WAY TO HONOR A LOVED ONE,
FRIEND, OR YOURSELF WHILE SUPPORTING
THE REV THEATRE COMPANY.

VISIT THEREVTHEATRE.COM/BEST-SEAT
TO GET THE BEST SEAT IN THE HOUSE!



Celebrate your true color.

jacobspress.com
315.252.4861
Auburn, NY



 **JACOBS
PRESS**

Printing and Direct Mail Services