

SEASON SPONSORS: M&T Bank TOMPKINS Trust Company generations bank LNB Banking. It's all about people.

THE

REV

Concert

A CELEBRATION OF ART AND COMMUNITY



generations

bank Member FDIC // agency // investment services

Keeping your life on script

mygenbank.com

LNB Is Proud to Serve as Your Hometown Bank!



LNB's Grant Avenue office

From our great rates to our unmatched customer service,
LNB is here to help you enjoy your next banking experience.

Stop in, or call us today!



LNB Banking.

It's all about people.

Member FDIC



LNB Grant Ave.

311 Grant Avenue Rd.
Auburn, NY 13021
(315) 567-0200

LNB Downtown Auburn

63 Genesee Street, Suite 3
Auburn, NY 13021
(315) 612-3456

BankwithLNB.com/Cayuga



Via Mondo Travel
 315-707-4372
 rosemary@ViaMondo.net
 www.ViaMondo.net

Regenerations



Unique Consignment
 Boutique
 For every lifestyle

101 Genesee Street
 Downtown Auburn, NY

Under the Black & White Striped Awning

- Furnishings
- Home Décor
- Textiles
- Brand Name Clothing
- Upcycles
- Vintage
- Artisan made products
- Soaps, Candles
& More!

"Like" us out on Facebook!
 315.406.0097
 www.regenerations2.com

**the
 auburn
 musician**



**Quality Musical
 Instruments**

**Professional
 Instructors**

**The Only Store
 Owned &
 Completely Staffed
 by Musicians**

Open Weekdays
 'til 7 PM
 Saturdays
 'til 3 PM

165 Grant Ave
 Auburn, NY
315-253-4966

**CL
 NB**

**Cayuga Lake
 National Bank**

CUSTOMER FOCUSED. COMMUNITY MINDED.

CAYUGALAKENATIONALBANK.COM

(315) 889-7358

HAVE A SPECTACULAR SEASON!

**BOYLE
&
ANDERSON, P.C.**

ADOPTION BUSINESS PLANNING
HOSPITALITY LAW IMMIGRATION
LITIGATION MEDICAID PLANNING
REAL ESTATE VEHICLE & TRAFFIC
WILLS, TRUSTS AND ESTATE ADMINISTRATION

ATTORNEYS AT LAW SINCE 1928

◆ ROBERT E. BARRY ◆ ROBERT K. BERGAN ◆ ALLY L. COLVIN
◆ DAVID G. TEHAN ◆ CHARLES H. LYNCH, JR. ◆ JOHN P. McLANE ◆ MICHAEL D. QUILL, JR.

110 GENESEE STREET, SUITE 300 ◆ AUBURN, NY ◆ 13021
PH. (315) 253-0326 ◆ FAX (315) 253-4968 ◆ WWW.BOYLEFIRM.COM



Bond

See Things From Every Angle

Call Bond when you want a law firm that understands your unique business needs and opportunities. We take the time to consider every angle and provide you with personalized solutions. We're a firm devoted to a thriving future for our clients and the communities in which we live.

 **BOND** SCHOENECK
& KING ATTORNEYS

ALBANY BUFFALO GARDEN CITY NEW YORK CITY ROCHESTER
SYRACUSE SARATOGA SPRINGS UTICA NAPLES, FL KANSAS CITY BOSTON

One Lincoln Center, Syracuse, NY 13202 • 315.218.8000 • BSK.COM



144 Genesee St.
Suite 502
Auburn, NY

Telephone: (315) 253-3217
Fax: (315) 253-3090

Nancy L. Oplinger, M.D.
Richard J. Freeman, M.D.
Tara A. Brackley O.D.



**JANE MORGAN'S
LITTLE HOUSE**

*Where your favorite
outfit is waiting!*

**378 Main Street,
Aurora, NY 13026
315-364-7715**

*Joseph Ribkoff
Chalet • Foil
Joules • Fat Hat
Clara Sunwoo
Alex Evenings
Lisette • Mansted
Habitat • Fridaze
IC Collection
Alashan Cashmere*

**Special Occasion
and Mother of the
Bride & Groom**

Mon – Sat 10-5
Sunday – closed

*Aunt Jane's Attic
Sale room...*

(315) 634-1100
www.hospicecny.org

**Providing hope, peace and
comfort for over 30 years**

*Proudly serving Cayuga, Onondaga,
Oswego and Madison counties*

2020-21 ITHACA COLLEGE THEATRE SEASON

SHE KILLS MONSTERS

By Qui Nguyen

THE MAGIC FLUTE

By Wolfgang Amadeus Mozart

SWEENEY TODD

Music & Lyrics by Stephen Sondheim
Book by Hugh Wheeler

HEAD OVER HEELS

Music & Lyrics by the Go-Go's
Book by Jeff Whitty & James Magruder

DANCE CONCERT

Original Choreography by Ithaca
College Theatre Faculty

THE TROJAN WOMEN

By Euripides
Translation by Ellen McLaughlin



ITHACA COLLEGE

Department of Theatre Arts

BOX OFFICE:
607-274-3224
boxoffice@ithaca.edu
tickets.ithaca.edu

BOARD OF DIRECTORS 2020:



Roberta Williams
President
WHMB P.C.



Connie Bouck
1st Vice President



Susie Gaynes
2nd Vice President



Kelly Wejko
Secretary
Cayuga County
Supreme & County
Court



Christie Schwab
Treasurer
Cayuga Lake
National Bank



Bill Abdallah



Joe Bartolotta
JBJ Real Property



Cathy Benson
Community Federal
Credit Union



Patrick Carbonaro
Carbonaro Law
Offices, P.C.



Menzo Case
Generations Bank



Matt Chalanick
The Real Estate
Agency



Martha Conboy



Peggy Dickman
Dickman Farms



Judy Foresman



Diana Gagliostro
Muldoon Dry
Cleaners, Inc.



Pamela Heleen
Cayuga Community
College



David Tehan
Boyle & Anderson, P.C.



Angela Winfield
Cornell University

THE REV THEATRE COMPANY ADMINISTRATIVE STAFF

(in alphabetical order)



Jessica Alexander
Development
Associate



Ed Bauso
Marketing Assistant



Melissa Carbonaro
Business Manager



Lisa Chase
Director of
Education



Bily Goheen
Company Mgmt.
Apprentice



Gina Guerriere
Director of
Audience Services



Shane Heidecker
Box Office Associate



Geoffrey Howard
Technical Director,
Education



Tiffany Howard
Costume Shop
Manager/Designer



Michael Iannelli
Production
Manager



Erin Katzker
Educational
Theatre Manager



Joshua Katzker
Artistic Associate/
PITCH Coordinator



Lynnette Lee
Managing Director



Rocky Love
Technical Director



Amanda Lubaszewski
Asst. to the Producing
Artistic Director



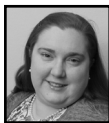
Christopher Lynch
Company Manager



Marshall Pope
Props Master



Dylan Parmenter
Facilities & Vehicles
Manager



Lisa Robillard
Audience Services
Manager



Olivia Semsel
Marketing Manager



Brett Smock
Producing
Artistic Director



Ashley Wilson
Wardrobe Supervisor

THE REV THEATRE COMPANY STAFF

PRODUCTION MANAGEMENT

Production Manager **Michael Iannelli**

PAINT SHOP

Scenic Charge **Kaitie Branton**

Scenic Artist **Bianca Binneman**

PROPERTIES

Props Master **Marshall Pope**

Props Apprentice **Nora Galley**

SCENE SHOP

Technical Director **Rocky Love**

Asst. Technical Director **Patrick Hardison**

Scene Shop Supervisor **Jalissa Frye**

Show Carpenter **Tony LiDestri**

Carpenter **Doriana Lichter**

Carpentry/Electrics Swing **Dylan Howick-Mathis**

Carpentry Apprentice **Annie Skinner**

SOUND

Sound Engineer **Eric Agsten**

ELECTRICS

Master Electrician **Chris Lipstreu**

Assistant Master Electrician **Devin Croad**

Electrics Apprentice **Molly Sharples**

Electrics Intern **Sam Burkovich**

COSTUMES

Costume Shop Manager **Tiffany Howard**

Asst. Costume Shop Mgr. **Meaghan Carlo**

First Hand **Rachel Saylor**

Cutter/Draper **Cassidy Huscher**

Costume Shop Apprentice **Rebekah Clow**

WARDROBE

Wardrobe Supervisor **Ashley Wilson**

Wardrobe Apprentice **Juliana Krampf**

Wig/Makeup Supervisor **Michael King**

STAGE MANAGEMENT

Production Stage Manager - **Nolan Todd**

Intern ASM - **Shelby Ennis**

COMPANY MANAGEMENT

Company Manager **Christopher Lynch**

Company Mgmt. Apprentice **Billy Goheen**

Company Mgmt. 2nd Apprentice **Whitley White-Body**

Company Mgmt. Intern **Morgan Jennings**

BOX OFFICE

Director of Audience Services **Gina Guerriere**

Audience Services Manager **Lisa Robillard**

Box Office Associate **Shane Heidecker**

Box Office Associate **Nancy Hunt**

MARKETING

Marketing Manager **Olivia Semsel**

Marketing Assistant **Ed Bauso**

Pink = Full Time Staff Member

Brett Smock
Producing Artistic Director

proudly presents:

THE
REV
Concert

A CELEBRATION OF ART AND COMMUNITY

Lighting Designer
Jose Santiago

Sound Designer
Kevin Heard†

Scenic Designer
Nate Bertone†

Costume Designer
Tiffany Howard

Props Master
Marshall Pope

Virtual Tap Choreographer/Video Editor
Julie Tomaino

Associate Choreographer
Elle-May Patterson

Virtual Choir Music Director/Video Editor
Brian Franco

Vocal Instructor
Amanda Franco

Production Stage Manager
Nolan Todd

Musical Direction by **JEFF THEISS and CORINNE AQUILINA**

Written, Directed, and Choreographed by **BRETT SMOCK****

Additional writing by Josh Katzker, & Lisa Chase

**Member of Stage Directors and Choreographers Society

† Member of United Scenic Artists, Local USA 829

CAST

(in alphabetical order)

- Wesley Barnes
- Joanne Baum
- Christopher Carl
- Paige Faure
- Aaron Galligan-Stierle
- Nicolette Hart
- Usman Ali-Ishaq
- Patrick Oliver Jones
- Jodi Kimura
- Elle-May Patterson
- Crystal Sha'nae
- Charles South
- Eric Ulloa
- Sally Wilfert
- Khalifa White

ORCHESTRA

- Corinne Aquilina Musical Director/Conductor/Keys
- Jeff Theiss Musical Director/Conductor/Keys
- Rob BridgePercussion
- Michael CaporizzoGuitar
- Terrance E. Caviness Jr. Trumpet
- Heidi Hoffman.....Cello
- Jim Spadafore..... Woodwinds
- Dan Mullarney Keyboard



Merry-Go-Round Playhouse is a professional theatre employing members of the American Federation of Musicians.



Merry-Go-Round Playhouse is a professional theatre employing members of United Scenic Artists, Local USA 829, a union of Designers, Artists and Craftspeople in the United States.

The Director-Choreographer is a member of the **STAGE DIRECTORS AND CHOREOGRAPHERS SOCIETY**, a national theatrical labor union.



Council on the Arts

Made possible by the New York State Council on the Arts with the support of Governor Andrew M. Cuomo and the New York State Legislature.

- 1. **“A New World”** The Company
- 2. **Opening Address**..... Mayor Quill
- 3. **“Show Business”**Paige, Crystal, Jodi, Khalifa
- 4. **Company Address**..... Bob Nethercott and The Rev Board of Directors
- 5. **Address**Suzanne Ford
- 6. **Alum Shoutout**.....Gaelen Gilliland
- 7. **2021 Show #1 Announcement** Mike Nye
- 8. **Tour Cayuga Feature**..... Karen Kuhl
- 9. **Seymour Library Feature** Lisa Carr
- 10. **“Hey, Old Friend”** Geno, Bruce, Julie, Kim, Chris, Joanne, Sandra, Julie
- 11. **Equal Rights Heritage Museum**..... Courtney Rae Kasper
- 12. **Alum Shoutout**.....Elizabeth Earley
- 13. **2021 Show #2 Announcement**..... Mike Nye
- 14. **Cayuga Museum Feature**.....Kirsten Wise
- 15. **The PiTCH**.....Josh Katzker, PiTCH Patrons, Eric
- 16. **New Musical Spotlight - *Anne of Green Gables*** Jen and Jenn
- 17. **Willard Chapel Feature**Kathy Walker
- 18. **Alum Shoutout**.....Kristy Cates
- 19. **Rev Ed - “A Million Dreams”** Lisa Chase, Rev Ed Kids
- 20. **Thommie Walsh Scholarship**..... Charles, Paige, Barbara Walsh, Erin Katzker
- 21. **2021 Show #3 Announcement**..... Usman, Mike Nye
- 22. **Harriet Tubman House Feature** Juhanna Rogers

- 23. Alum Shoutout Jacqueline Petroccia
- 24. Witness Uganda/ “Beautiful” Matt Gould, Griffin Matthews
- 25. Seward House Feature Maria Coleman
- 26. New Musical Spotlight - *Austen’s Pride* Igor Goldin, Erin Craig
- 27. Syracuse Stage Feature Bob Hupp
- 28. “Tap Your Troubles Away” Paige, Elle-May, Wesley, Charles, Bella, John, Katie
- 29. Alum Shoutout Scott Weinstein
- 30. 2021 Show #4 Announcement Khalifa White
- 31. APT Feature Carey Eidel, Angela Daddabbo
- 32. Alum Shoutout Parker Esse
- 33. Angels Tribute Brett Smock, Corinne Aquilina, Jessica Alexander
- 34. “I’ll Be Seeing You” Chris
- 35. Alum Shoutout Josh Walden
- 36. Hangar Theatre Feature Thena Gitlin
- 37. Absolute Dance Feature Yvonne Hassett
- 38. Arts In Motion Feature Samantha Howell
- 39. New Musical Spotlight - *Loch Ness* Marshall Paillet
- 40. Schweinfurth Museum Feature Donna Lamb
- 41. 2021 Show #5 Announcement “The Dynamos” (Sally, Nicolette, Jodi)
- 42. “Happy Days/Get Happy” “The Dynamos” (Sally, Nicolette, Jodi)
- 43. Closing Remarks Brett Smock
- 44. “Hear My Song” The Company

WHO'S WHO IN THE REV CONCERT

(in alphabetical order)



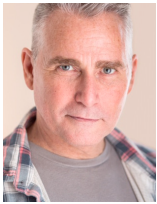
Wesley J. Barnes is excited to be back at The Rev, last seen in *Grand Hotel* (Jimmy) & *Mamma Mia!* (Pepper). As a member of the Kennedy Tap Co. he's performed for the NAACP Image Awards, PBS

Holiday Spectacular, and Michael Jackson's 45th Birthday party. He's toured as a featured performer in *Magic of the Dance* in both Germany & Taiwan. Credits: Nat'l Tour of *Jesus Christ Superstar*; *Pamela's First Musical*, *Sophisticated Ladies*, *In the Heights*, *Choir Boy*, *Hairspray*, *The Scottsboro Boys*, *Newsies*. @mistahwes Jer 29:11 Wesleyjbarnes.com



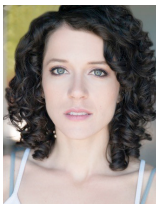
Joanne Baum Broadway/Nat'l Tour: *Bells Are Ringing*, *Les Mis*, *CATS*. Off-Broadway: *Ruthless!*, *Kuni Leml*. Regional: *Falsettos* at Hartford Stage; *On The Town* at Goodspeed; *Ruthless!*; *Ragtime* at Hangar Theater.

Rev: *Working*, *Neurosis*, *Les Mis*, *Peter Pan*. Education - BFA, Boston Conservatory of Music. Joanne works as an RN for Cayuga Medical Center.



Christopher Carl has had the pleasure of performing in 6 shows at The Rev: *Les Mis*, *The Producers*, *Kiss Me Kate*, *42nd Street*, *Legally Blonde*, and most recently in *South Pacific*. He's been seen on

Broadway in *Mamma Mia*, *Tarzan* and *South Pacific*. Some of his favorite roles other than the ones he played in the shows above are: Billy Flynn in *Chicago*, the title role in *Johnny Guitar*, Hajj in *Kismet*, Max in *Lend Me A Tenor*.



Paige Faure Broadway: *Cinderella* (Ella); *Bullets Over Broadway* (u/s Ellen); *How to Succeed...* (Hedy La Rue). Nat'l Tour: *Cinderella* (Ella), *A Chorus Line*, *Chitty...*, *Little Women* (Jo), *Aida*, *From Here to Eternity*.

TV: "Search Party." Love my boys! Eph. 4:32.



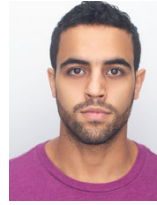
Aaron Galligan-Stierle is thrilled to return to The Rev where he was previously seen in *Parade* (Leo Frank). Broadway: *Phantom of the Opera* (Monsieur Andre), *Ragtime* (Henry Ford), *Dr. Seuss' How The Grinch Stole Christmas*

(Papa Who). Nat'l Tour: *White Christmas*. Regional: Utah Shakespeare Festival (7 seasons), Kennedy Center, Oregon Shakespeare Festival, TUTS, Papermill Playhouse, MSMT, and more. Executive Producer for "Ruin Me" now available on AMC's Shudder. Freelance director & professional audition coach with MaxTheatrx. BFA Shenandoah University (Musical Theater) MFA Penn State (Acting). Love to Shannon, Devin & Zoe. aarongs.com.



Nicolette Hart is honored and thrilled to be a part of The Rev Concert, Brett Smock's tireless dedication to the Arts, & the amazing Auburn Community that supports them! Broadway: *Rent*, *The Wedding Singer*, *Legally*

Blonde, *Million Dollar Quartet*. Off Broadway/Regional: *Mamma Mia!*, *Cabaret*, *SuperYou*, *Rent*, *The Civil War*, *Grease*. TV/film: "Prescient," "Nurse Jackie," "L&O," "Lipstick Jungle," "Cherry Crush". In 2013, Nicolette opened *NicoletteHartStudios*, a private vocal/acting studio, and she teaches at Nazareth College in the Theatre and Dance Dept. Since 2003 Nicolette has had the distinct privilege of touring the world with the incomparable Bette Midler. SAG-AFTRA/AEA.



Usman Ali-Ishaq is a recent grad of Ithaca College, and has been seen in Cortland Rep's 2019 season, the industry reading of *We Are Aameena*, Synetic Theater, Films: "Kringle Time," "Heather Has Four Moms," "WonderWoman

1984". Represented by BRS/Gage. He's thrilled to share this evening with you. Lest we forget while we enjoy that justice is yet to be served and change has yet to cease. #blacklivesmatter usmanaliishaq.com | @usmanaliishaq

WHO'S WHO IN *THE REV* CONCERT



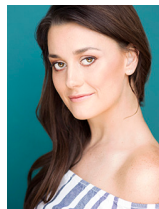
Patrick Oliver Jones is so appreciative to be back at The Rev! Previous shows: *Crazy For You*, *Light In the Piazza*, *Mary Poppins*, *Treasure Island*, *Man of La Mancha*. Off-Broadway: *The Extraordinary Ordinary*, *Church &*

State, *Absolution*, *The Magdalene*. He was also on *The Addams Family* & *Evita* national tours. He's also host of the "Why I'll Never Make It" theater podcast. Thanks to God, my husband Dylan, Brett & this wonderful cast! pojones.com



Jodi Kimura, originally from Maui, Hawaii and now in LA, is thrilled to be back at The Rev where she last appeared as Rosie in *Mamma Mia*. Jodi also appeared as Mrs. Kipfer in

Tim Rice's *From Here to Eternity* directed by Brett Smock (Ogunquit Playhouse, industry presentation NYC). She received a Helen Hayes nod for her Bloody Mary in Lincoln Center's *South Pacific* 1st National Tour of the US and was the only American in the same production in the UK. Regional favorites: *If All the Sky Were Paper* (Tetsuko) with Annette Benning at Kirk Douglas and Kennedy Center, *The Tempest* (Juno) with Olympia Dukakis at ATP & Orlando Shakes, *Vietgone* (Huong) at American Stage, *Mamma Mia!* (Rosie) at Sacramento Music Circus. Love to Brett and The Rev family.



Elle-May Patterson was born and raised in Sydney, Australia, completed her Honors degree for Musical Theatre in Singapore, & has been living and working in New York City for the last 5 years. She is happy to be back

at the Rev after working on *Grand Hotel*, *Beehive*, *Mamma Mia!*, *The Best Little Whorehouse in Texas!* Other recent credits: *Spongebob The Musical*, *A Chorus Line*, *Anything Goes*, *Cabaret*, *Priscilla*, *Queen of the Desert*; Elton John's 'Life Ball' in Vienna, Austria; The MTV Video Music Awards; The World Mobile Congress in Barcelona.



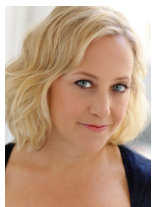
Crystal Sha'nae is grateful to be back! Nat'l Tours: *Summer: The Donna Summer Musical*; Off-Broadway: *Dog Man The Musical*; Regional: *Nina Simone: Four Women* at Alabama Shakes; *Beehive, Parade*, *Best Little Whorehouse* at The Rev; TV: "The Blacklist," "Unforgettable". All Glory to God, and endless gratitude to Brett & my supportive family. Too Blessed To Be Stressed!



Charles South is excited to be back at the Rev! Previously seen in *Crazy For You* (Moose), *West Side Story* (Bernardo); Select Credits: *Aladdin* on Broadway, NYC Workshops: *Bull Durham* & *King Kong*, Int'l Tours: *West Side Story*, *Carmen La Cubana*; Regional: *Up Here* at La Jolla Playhouse, *Fiddler on the Roof* at Goodspeed, *A Christmas Carol* at Hartford Stage, *Seussical* at Conn Rep, *Les Mis* at LTOTS, *Swing!* at Wick Theatre. Charles sends love to his family!



Eric Ulloa was in the Original Broadway Company of *On Your Feet!*. Eric has appeared on The 2016 Tony Awards, Macy's Thanksgiving Day Parade & A Capital Fourth. Eric is the book writer of *Passing Through*, which had its World Premiere at Goodspeed. Eric is the author of *26 Pebbles*, which had its world premiere at The Human Race Theatre Company, and of the play *Reindeer Sessions*. Eric is the book writer of the musical *Molly Sweeney*, based on the play by Brian Friel. IG: theulloa



Sally Wilfert, Broadway: *Assassins*, *The Adventures of Tom Sawyer*, *King David*. Nat'l Tour: *The 25th Annual Putnam County Spelling Bee*. Off-B'way: *See Rock City*, *When We Met* (co-collaborator), *Make Me A Song: The Music of*

William Finn, *The Mistress Cycle*, *The Prince & The Pauper*. Regional: TUTS, Goodspeed, The Maltz Jupiter Theatre, La Jolla Playhouse,

WHO'S WHO IN THE REV CONCERT

Cincinnati Playhouse, Baltimore Center Stage, Pittsburgh CLO, Barrington Stage, Hartford Theatreworks, in such shows as *Mamma Mia*, *Best Little Whorehouse*, *Chasing Rainbows*, *Damn Yankees*, *Kiss Me Kate*, *Light in the Piazza*, *Little Miss Sunshine*, *Amadeus*, *Les Mis*. sallywillfert.com



Khalifa White is happy to be back home, last seen in *Beehive* at The Rev. Favorite Credits: *School of Rock* 1st National Tour, *Aida*, *Smokey Joe's Cafe*, *The Bodyguard*, *Ain't Misbehavin*, *Dreamgirls*, *Hairspray*, *The Wiz*,

Rockin Down Fairytale Lane, Hong Kong Disneyland/WDW (Tiana/Kibibi/Nala). #TheSearchForRoxie Top 3 finalist, *Caroline or Change* Broadway 2021. Thank you God, supportive Family, Friends, GBM and Brett. "To whom much is given much is required." IG/Twitter/Youtube: @Lifaland, khalifawhite.com for new music and projects.

Corinne Aquilina (Music Director) is happy to return to the Rev. NY & tour credits include Broadway pit of *The Boys from Oz*; *Annie*; *Five Guys Named Moe*; *The Great American Trailer Park Musical*. Arranger/Orchestrator: *Menopause, the Musical*. Corinne was Musical Director for the North American Premiere of *From Here to Eternity* & Theatrical Rights Worldwide's *Saturday Night Fever*. Regional: *Hairspray*, *The Drowsy Chaperone*, *Full Monty*, *42nd Street*, *Five Guys Named Moe*, *Smokey Joe's Cafe*, *Spelling Bee*, *Cabaret*, *Chicago*, *Miss Saigon*, *Thoroughly Modern Millie*, *Evita*, *La Cage*, *My Fair Lady*, *The King & I*, *The Sound of Music*, *Nunsense*, *Oliver*, *Tintypes*, *Brigadoon*, *Kiss Me Kate*, *Anything Goes*, *Dames at Sea*, *Singin' in the Rain*, *Gentlemen Prefer Blondes*, *Damn Yankees*, *Daddy Long Legs*. Corinne is a member of AFM Local 802, Dramatists Guild, & ASCAP. Corinne is Program Director for BFA Musical Theatre & Asst. Professor at Nazareth.

Nate Bertone (Scenic Designer) is a NYC based theatrical storyteller. Nate works as a director, designer, and writer. He previously designed at The Rev with *Grease!* In the last several years, he's contributed to more than

40 productions across the country, including *Singin' in the Rain*, Disney's *Newsies*, *Mamma Mia!* at Broadway Sacramento; *The Jungle Book* at The Children's Theatre of Cincinnati; *Shrek & Sister Act* at NSMT; *The Addams Family*, *Titanic* at Arizona Broadway; *Gypsy*, *Once*, *Elf*, & *A Gentleman's Guide to Love and Murder* at Engeman. He's assisted On & Off-Broadway, including *Superhero* at Second Stage; *A Bronx Tale* on Broadway; and the Susan Stroman-helmed *Crazy for You* at Lincoln Center. As a Director, Nate has recently worked on *Polkadots* at TCT; *Into The Woods* at Cap21/Molloy; *Entangled* at Salem Theatre Company; and his new play with music, *Letters From War*, at NSMT. Proud faculty member at Manhattan School of Music. natebertone.com @natebertone

Robert Bridge (Percussion) is a Professor of Music at Onondaga Community College where he's chair of the music department. Robert has degrees from the University of North Texas (B.M.E.), Southern Methodist University (M.M.), and the Eastman School of Music (D. M. A. and "Performer's Certificate.") Robert performs regularly in the Syracuse area with the Society for New Music and Symphoria and can be heard on commercial recordings of both groups. His compositions for percussion are published by Warner Brothers & Kendor.

Michael Caporizzo (Guitar) is an educator, audio engineer, & guitarist who maintains a diverse & rewarding career in music. He holds a Master of Music degree in Guitar Performance and a Bachelor of Music in Sound Recording Technology from Ithaca College, where he is currently an Assistant Professor in the School of Music. Previous performances with The Rev include *Mamma Mia!*, *Saturday Night Fever*, *Cats*, *Legally Blonde*, *Altar Boyz*, & *Hairspray*.

Terry Caviness (Trumpet) is the Director of Bands at G. Ray Bodley High School, where he directs the schools Wind Ensemble, Concert Band, Two Jazz Ensembles, Jazz/Rock Combo, Pep Band & Brass Ensemble. He also serves on the high school Leadership Team. Mr. Caviness



Enjoy a great performance here tonight.

Enjoy a great performance with us everyday.

We are proud supporters of theatre in our community.

Thank you for all the amazing performances.

You move us, inspire us, transport us. Thank you for adding so much magic to our lives.

TOMPKINS 
Trust Company | Insurance Agencies
Financial Advisors

TompkinsTrust.com | TompkinsIns.com | TompkinsFinancialAdvisors.com

is an adjunct professor of Music at SUNY Oswego, serving as the school's brass instructor and teaching music theory and appreciation. He's co-founder & conductor of the Allegro Youth Wind Ensemble program, which consists of a younger concert band of 7-9th graders and an older select ensemble drawn from 10-12 grade students around CNY. Mr. Caviness serves as a guest conductor, clinician & performer around NY.

Kevin Heard (Sound Designer) is delighted to be back at the Rev. Previously for the Rev: *Grease, Ghost, Parade, From Here To Eternity*. Other sound design credits include: Broadway (Associate): *All The Way, The Cherry Orchard, The Country House, Sylvia*. Off-Broadway: *The Hello Girls, Midnight at The Never Get, Smokey Joe's Cafe, In & Of Itself, The View Upstairs, The Total Bent, Clinton The Musical, Long Story Short, The Underclassman*. Along with dozens of productions at regional theatres across the US, Kevin designed the sound for the International Premieres of *Fun Home* (starring Lea Salonga), *Kinky Boots*, and *Matilda* in Manila, Philippines. Kevin also works as the Associate Producer for BenDeLaCreme Presents. HeardAudio.com

Heidi Hoffman (Cello) made her debut as soloist with the Seattle Symphony at the age of 17. She received her Bachelors of Music and Performers Certificate at the Eastman School of Music, & an MM & DMA from Stony Brook University. As a fellowship student at the Tanglewood Music Center, Heidi performed under conductors Leonard Bernstein and Seiji Ozawa. She has performed in North and South America, Europe and Japan with such diverse groups as the American Symphony, Jupiter Symphony, Tchaikovsky Chamber Orchestra, Northwest Sinfonietta, Pacific Northwest Ballet, the new music group Ensemble X, as well as with the rock bands Paige and Plant, and Heart. Ms. Hoffman has been a member of the Syracuse Symphony in New York, the Grant Park Symphony Orchestra in Chicago, and has served on the faculties of Ithaca College, Wells College, and Cornell University. She has recorded for the Albany and Fleur de Son labels, and her teachers have included Alan

Harris, Timothy Eddy, and Julius Levine.

Tiffany Howard (Costume Designer) is elated to be in her 12th season at The Rev! After receiving her MFA from Texas Tech University & then teaching college for 5 years in Missouri, Tiffany found a happy home here in both the summer and Education shops where we take on the task of teaching a whole new generation about the power of theatre. You may have seen some of her work in recent seasons, including *Working, South Pacific, Grand Hotel, Grease, Beehive!, Holiday Inn, Mamma Mia!, Guys and Dolls, Parade, Best Little Whorehouse...*, and *Crazy for You*. Favorite designs from past seasons: *Always... Patsy Cline; Oklahoma!; West Side Story; Lost Highway, The Hank Williams Story; The Marvelous Wonderettes; & Cabaret*. Thank you to the amazing Costume Shop for all the work and laughter—and for making such good looking shows in such a short amount of time! And a huge shout out to the Wardrobe Team (lead by Ashley Wilson) who makes miracles happen every day! Couldn't do this without all of you! As always, a huge thank you & all my love to Geoff Howard—the best darn husband a girl could ask for.

Daniel Mullarney (Keyboard) is a Cayuga County music director and educator. He's worked as an Assistant Music Director for *Guys & Dolls, Mamma Mia!, Grease, and Grand Hotel*. He is also the music director for MTI. Dan has taught acting workshop classes and assistant music directed at The Hangar Theatre & Ithaca College. Dan has a Masters in Conducting Musical Theatre/Opera from Ithaca College and is always beyond grateful to be a part of the Rev family.

John Read (Featured Dancer) is a rising senior at Moravia High School and is thrilled to have this opportunity to be involved at The Rev. He takes classes at Absolute Dance & has been in community productions, including *A Chorus Line* (Mike) with Auburn Players. He plans to attend college for musical theater & would like to thank his family & mentors for supporting him.

Jose Santiago (Lighting Design) is happy to be returning to The Rev for his ninth show here. Past designs include: *Working, Grease,*

Parade, Holiday Inn, Mamma Mia! at The Rev; *Mamma Mia!, Peter Pan, Spamalot, Evita, Hairspray* at NSMT; *Rent, Anything Goes, R+H's Cinderella, Sister Act, Young Frankenstein, White Christmas* at Gateway; *Of Mice and Men* at Bay Street Theatre; *Man of La Mancha, La Cage aux Folles, Crazy for You* at The Wick Theatre; *Shrek, Hunchback of Notre Dame, Matilda* at 5 Star Theatricals. He received his Master of Fine Arts in Lighting Design from Florida State University. jsantiagodesign.com

Bella Siddall (Featured Dancer) is more than excited to have an opportunity working with The Rev. She's currently a double major at Hobart and William Smith Colleges studying dance and physics. She grew up dancing at Absolute Dance with Yvonne Villano-Hassett and would like to thank her and the rest of the staff for all they've done to move her dance career forward.

Brett Smock (Director/Choreographer)** was born in Kailua, Hawaii, the son of a US diplomat. Brett spent his first 17 years living overseas before landing in Washington DC, where he received his BA in Theatre from The American University. He began his tenure here as a dancer in the 1992 season, and by 1996, had become a resident director/choreographer. In 2012, Brett became the General Manager/Associate Artistic Director and in 2014, assumed the title of Producing Artistic Director. Brett's Director/Choreographer credits span over 100 national & international productions. Rev highlights: *Mamma Mia!* (2018), *Parade* (2017), *The Light In The Piazza* (2015/Regional Premiere), the new *Saturday Night Fever* (2015 World Premiere), *Treasure Island* (Rev 2016/Arkansas Rep 2013 Regional Premieres), *Cabaret* (2012). Additional highlights: *The Mudge Boy* (with Donna McKechnie and Sally Mayes); first European tour of *Guys and Dolls*; and with Stephen Sondheim's blessing, a new version of *Putting It Together* at the Emelin Theatre. Producer/director/choreographer for the North American premiere of Tim Rice's *From Here To Eternity* (Pre-Broadway/Rev/2016 and Ogunquit Playhouse/2017). Adjunct faculty member at many colleges and universities. Actor's Equity Association (AEA), The Dramatists Guild (DG), the National Alliance of Musical Theatre

(NAMT) & the Stage Directors and Choreographers Society (SDC). Brett lives in Auburn and NYC.

James R. Spadafore (Woodwinds) is excited to be playing in the pit with such outstanding conductors and musicians. As a freelance musician James has performed with the likes of Marvin Hamlisch, Natalie Cole, Tony Bennett, Frank Sinatra Jr., Ben Vereen, Bob Hope, Petula Clark, The Fifth Dimension, The Spinners, Frankie Valle and the Four Seasons, The Four Tops and The Temptations. As a pit musician, Mr. Spadafore has performed with the touring companies of *City of Angels, The King And I, Chorus Line, Peter Pan, Big, Chicago, The Producers, Hairspray, Spamalot, Wicked, The Book of Mormon, Phantom of the Opera, Beautiful: The Carole King Story, Motown the Musical* & the Lincoln Center tour of *My Fair Lady*. Mr. Spadafore is a member of the "Stan Colella Orchestra" & has performed at Syracuse Stage. James resides in Liverpool, N.Y. and wishes to thank his parents Pat and Fran, his children Joel, Crista, and Samantha and his significant other Betsey who inspires him each and every day.

Jeff Theiss (Music Director) is excited to return to The Rev for his 12th season after serving as Music Director for the 10-time Tony Award winning musical, *The Band's Visit*. Past Rev music direction credits include: *Working, On The Town, The Light In The Piazza, Sweeney Todd, Parade*. Jeff served as Music Director of the Ithaca College Theater Dept. for the '19-20 school year. BME - Baylor University; MM - Ithaca College

Nolan Todd (Stage Manager) is grateful to return to the Rev for his fourth consecutive season. Regional: *South Pacific, Grease, Anne of Green Gables, Best Little Whorehouse..., Guys and Dolls*. Collegiate: *Bonnie & Clyde, Company, Spring Awakening, 9 to 5, A Midsummer Night's Dream, Bells Are Ringing, Grease, Dance Concert*. He recently returned to the Stage Management Mentor Project at the 2019 USITT Conference in Louisville, KY. He assisted in the coordination of the project & stage managed the *New Products Showcase*. Nolan held a stage management apprenticeship at The Juilliard School in NYC. Proud member of EMC & The Stage Managers' Association. Love & thanks to Regan, Momma, Dad & Brandon. [@ntodd_portfolio](https://www.instagram.com/ntodd_portfolio) | nolantodd.com

STAR VACATION

IN YOUR OWN



Photo courtesy of the Inns of Aurora



Photo credit Michelle Kisley

For a FREE visitor's guide to Cayuga County call 800-499-9615 or visit tourcayuga.com

TOUR **CAYUGA**  .com
in the FINGER LAKES

18 33

KITCHEN
& BAR



1833KITCHEN.COM

the INNS of AURORA

auburn *Live*



...Connecting Our Community
in the 2020/21 Season & Beyond

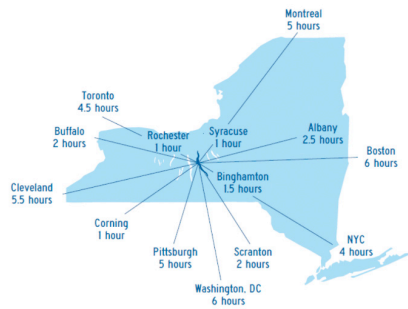
AUBURNPUBLICTHEATER.ORG
8 Exchange St. | Downtown Auburn

Rose Hill Mansion
Johnston House

A 19th-Century Farm Estate
Open May to October for Guided Tours * Geneva, NY
www.genevahistorysociety.com
315-789-5151



*Fine Wines. Family Farms.
Taste the Tradition.*



WHITE BIRCH VINEYARDS
PROUD SPONSOR OF THE

The Rev Theatre Company

Have a glass of Finger Lakes wine during the streaming performances. Purchase online and have delivered right to your front door

www.whitebirchvineyards.com



LODGING AND
ACCOMMODATIONS
FOR VACATIONS
AND GETAWAYS IN
THE FINGER LAKES
REGION OF
NEW YORK.

INNATTHEFINGERLAKES.COM

(315) 253-5000

FRONTDESK@INNATTHEFINGERLAKES.COM



Lasca's

RESTAURANT & CARRYOUT

Hours:
Tues-Thurs 5:00-9:00pm,
Fri & Sat 5:00-9:30pm, Closed Sun-Mon

Providing the Auburn area with the best in fine dining since 1987.
From fresh seafood, veal and chicken to steaks and chops,
Lasca's provides sit-down dining that can't be beat.
Voted best Restaurant of the region last 15 years by locals!



Reservations: 315-253-4885

Carry Out: 315-253-6900

252 Grant Avenue, Auburn

www.lascas.com

- SEASONAL OUTDOOR DINING
- GIFT CERTIFICATES AVAILABLE



**Midstate Mutual
Insurance Company**

Auburn, NY

Trusted by family and neighbors since 1879.

Personal
Business
Farm



Find your Midstate Agent at
www.MidstateMutual.com

UPSTATE
CANCER CENTER

AT



**AUBURN
COMMUNITY
HOSPITAL**

**AT AUBURN COMMUNITY HOSPITAL, WE HAVE
FOUND MORE WAYS TO SPECIALIZE IN YOU.**

We are partnering with Upstate Cancer Center to provide cancer care in the comfort of our community.

Our new cancer center at Auburn Community Hospital is ready to provide individualized treatment options from some of the brightest experts in the country. Every care plan ensures the comfort and convenience for patients and families.

Call 315-253-1818 to schedule an appointment.
Open Monday-Friday 8:30am-4:30pm.

YOU CAN ALSO VISIT OUR WEBSITE AT:

auburnhospital.org/cancercares



**JE ELECTRICAL
& CONTRACTORS**

2116 Ellis Drive

PO Box 624

Auburn, NY 13021

Commercial & Industrial Wiring

Phone – 315 252 6430

Fax – 315 253 0787



**HANGAR
THEATRE
COMPANY**

PARTNERING IN FLIGHT
 Cayuga
RADIO STATION

PARTNER IN THE ARTS
 **ITHACA
COLLEGE**

Sense and Sensibility

By
Kate Hamill

Based on the novel by
Jane Austen
Directed by
Shirley Serotsky

Virtual streaming event
Saturday, August 8 @ 7:30 PM EST

www.hangartheatre.org/sense
(607)273-ARTS



Celebrate your true color.

jacobspress.com
315.252.4861
Auburn, NY



 **JACOBS
PRESS**

Printing and Direct Mail Services

THANK YOU!

You make all of this possible! Become a part of the Rev Family: Go to TheRevTheatre.com and click on "Support" for more information!

CORPORATE AND FOUNDATION DONORS

Executive Circle (\$100,000+)

Fred L. Emerson Foundation, Inc.

Founder's Circle (\$25,000-99,999)

Allyn Family Foundation

Central New York Community Foundation

Leadership Gifts (\$10,000-24,999)

Guido & Ellen Palma Foundation

New York State Council on the Arts

Stanley W. Metcalf Foundation

Richard S. Shineman Foundation

TRIAD Foundation

Producer's Circle (\$3,000-9,999)

The Jim & Juli Boeheim Foundation

Columbian Foundation

D.E. French Foundation

John P. & Elizabeth Y. McKinnell Family Foundation

Mitchell & Louis Shulman Charitable Trust

The Richard Mather Trust

The Jon Ben Snow Foundation

Pacesetters (\$1,000-2,999)

Kiwanis Club of Auburn

Cayuga County DFY

Benefactors (\$100-999)

Skaneateles Area Arts Council

CORPORATE SPONSORS

M & T Bank - Season Sponsor

Generations Bank - PITCH Sponsor

CFCU Community Credit Union - Executive Sponsor

Lyons National Bank -

Director Sponsor

Tompkins Trust Company -

Producer Sponsor

NUCOR

Jacobs Press

BUSINESS PARTNERS

Silver \$2,500

Boyle & Anderson

Cayuga Lake National Bank

Midstate Mutual Insurance

INDIVIDUAL DONORS

Featured Player \$2,500 - 4,999

John & Connie Bouck

Barbara & Jack Lewis

Ron & Becky Munn

Roberta Williams, President of WHMB, PC

Leading Role \$1,000 - 2,499

William Abdallah

Jeanne M Beecher

Cathy Benson

Menzo & Sue Case

Patrick Carbonaro

Matthew Chalanick

Martha Conboy

Kyle Cool & Party

The Rev. Dr. James & Nancy Corl

Donna & Bill Davis

Peggy Dickman

Nancy Walsh Edwards

Larry & Karen Epstein

Dr. Art & Joanne Foresman

Dick & Judy Freeman

Mrs. Diana Gagliostro

David & Helene Gallagher

Susie Gaynes

Pamela Heleen

Frank & Jeannie Henderson

Robert & M Jane Herman

Alice Houser

Chelsea Janke

Logan Park Lofts

Angela Winfield & Lance Lyons

John P & Elizabeth Y McKinnell

Andrew & Sherie Ramsgard

William Dorr & Janet Scarbrough

Christie Schwab

David Tehan

Kelly Wejko

Maggie & Jim Wells

Aristotle Williams

Carl & Kristy Weber

Supporting Actor \$500 - 999

In Memory of Angela Rowley

- On Behalf of the Rowley Children

Joe & Maureen

John & Shirley Barber

John & Mary Bartholomew

Dorothy Booher

Bob & Linda Bower

Mary Jo & Jerry Bower

Nancy Bunn

Don & Pat Cleaver

Gary & Janet Cuthbert

Brad & Holly Davidson

Merrellyn Foote

Beatrice Franklin

Alex & Donna Giambartolomei

Deana Geaslen

Loretta Heimbuch

Barbara Heistman

Dan & Sharon Johnson

John & Nancy Karpinski

Raymond A. Lander, Jr

Mary McDonald

Mr. & Mrs. Gardner H McLean

Emily & Joe Metz

Elaine Meyers

Dr. Randy & Lisa Mitchell

L. Janet Morse

Bob & Madeleine Nethercott

Emma Power

Jane A. Reid

David Restey

Mary Robertson

David F. Gwynn & Vivian Sciarabba

Rick & Anita Slagle

Rick & Penny Stoker

Frank & Rose Swiskey

Nolan Todd

David D Wood

Cameo \$300 - 499

In Memory of Polly Hutchinson

In Loving Memory of

Vince & Dorothy Klein

Ben & Sue Ahner

Linda Albicelli

Donald Anguish

Susan Ayers

Patricia Ball

Jane Banuski

Ann Barron

Fred Belcher

Mickey Belosi

Julie Bourke

Invest in what you love!

Michael Brady
Beverly Buck
Tracy Buys
Jeff & Nancy Calkins
Celeste Carmichael
Jim & Debbie Chase
Beverly J Clark
Don & Jean Clark
G. Alan Clugston
Ron & Kathy Colella
Mr. & Mrs. John D Connors
Gwynne & Harrison Cordova
Philomena Corsi
Sue Dec
Maryann DeMasi
Judy Doyle
Bonnie Dunn
Karen Eggleston
Victoria Farkas
John & Mary Farrell
Mary & Mark Fishlock
Lynn Frizelle
Joan R Hass
Mr. & Mrs. David R Heath
Mary Ellen Hennigan
Patricia Henry
David Herlan
Maureen Hier
George & Carolyn Hiza
Bonnie & Wayne Hoskins
Marleen Hubbs
Frank & Kathy Jerome
Edward & Susan Judge
Elisa Keating
Mr. and Mrs. George Kerstetter
Thomas King
Kenneth Kishtok
Donald & Barbara Klem
Richard & Barbara Knaul
Lynnette Lee
Skip Lehman
Guy & Dawn Mackenzie
Tom Maye
Neal & Doreen McLane
Mr. and Mrs. Dan McLaughlin
Gail Mitchel



Ellen & Marty Nodzo
 Catherine Noble
 David Kapell
 Darrell O'Keefe
 Pauline Ofsowitz
 Cal & Joan Organ
 Ray & Sally Paleczny
 Michael & Michelle Paparo
 Dave Parker
 William Pine
 Sandy Podulka
 Ken & Beulah Pollard
 Lucinda Porter
 Francis Quirk
 Richard Redmond
 Barbara Resseguie
 Chuck & Sally Reutlinger
 Jan Rybinski
 Dorothy Sarvay
 Bonnie Scolaro
 Donald Siegel
 Jim Spadafore
 Pam Stewart
 The Stull Family
 Vincent & Josephine Valicenti
 Phil & Jane Thorick
 Sam & Linda Vitale
 Mike & Marcia Walsh
 David & Dawn Wayne
 Louise B Wilson
 Bill Whiting
 Mr. & Mrs. Steffen Wolff
 Mr. & Mrs. Stuart Wood
Chorus \$150 - 299
 Anonymous (8)
 Norma Charles In Memory of
 David Charles
 In Memory of Dorothy Doeblen
 In Memory of Seymour Volinsky
 Dr. Jomarie Alano
 Gino & Maxine Alberici
 Mr. and Mrs. Michael Anna
 Linda Arcangeli
 Kenneth Arnold
 Donna Arpino
 Steve Auyer
 Reverend W. Gary Baker
 Mary Ann Baner
 Leslie Banuski
 Norman & Nancy Barnett
 Janice Bartlett
 AnnaMae Bateman
 Grace Bates
 Ann Bauso
 Richard & Phyllis Beal
 Steve & Liz Becht
 Kathy Becker
 Mr. & Mrs. Richard Beebe
 Beverly Benassi
 Tom & Sue Beresford
 Donald Besig
 Frank Bickel
 Marcia & John Bishop
 Cheryl Bonetti
 Sharon Bower
 Mary Bowes
 David, Beth, & Amanda Bowman
 Margaret Brackley
 Don & Linda Brandstetter
 Nancy Brass
 Bonnie Bratt
 Mr. & Mrs. James Brayer
 Robin Braunstein
 Mary Bresnan
 Jeri Vargo & Anne Brodie
 Sheryl Brown
 Kermit Buckman
 Ronald Buckman
 Grace Burritt
 Jean Cadwallader
 Sally Cafalone
 Christina Calarco
 Ray & Barb Cali
 Norma Calkins
 Pat Callahan
 Karen Camp
 Michael Carbury
 Enid Cardinal & Peter Dunham
 Sally Carmer
 George & Tracey Carruth
 Peter Cashin
 Joyce Chamberlain
 Gary Chapin
 Kathy & Jim Chase
 Linda Chow
 Joseph Clare
 Alton Clark
 Bette Cleere
 Michael Colabufo
 Kenneth Colegrove
 Don & Barb Coleman
 David & Fay Connelly
 Angelo Coppola
 Tony & Mary Anne Corasaniti
 Laurie Cornwell
 Sue Covington
 Joyce Cowell
 Dana Coye
 Diana Coyne
 Jane D. Crosby
 Jacqueline Cross
 Sharon Crowley
 Karen Cummings
 Daphne Cunningham
 Joe Cutri
 Roger Dahlin
 Viola Darling
 Lynn Davis
 Brian Deacon
 Betty DeFazio
 David DeFelice
 Ann DeShane
 Mr. & Mrs. J Deuble
 Barbara A Devine
 Lorelea Dewitt-Antilla
 Mr. & Mrs. Gary Dick
 Roger & Judy Dilmore
 Paul J Dolan
 Gillian Donaldson
 Virginia Drake
 Lloyd Dropkin
 Linda Dugan
 Eric Dumond
 Mary Ann Egan
 Joanne E Earley
 Grace H. Ellegate
 Helen Engel
 Mr. and Mrs. Ken Entenmann
 Glenn Fadner
 Peggy Fanning
 Neil & Lynn Farrar
 Anita Fenner
 Richard & Jean Fenton
 Marcia Herrling Finch
 Mr. Clarence Fink
 Gerald & Donna Fisher
 Jean Flanigan
 Barbara Fleming
 Ronald Fletcher
 Dave & Joan Ford
 Bernard Forth
 Sharon Fox
 Nancy Frakes
 Andrea Fusco
 Marybeth Gaffney
 Ed & Marybeth Galka

Dr. Deb Geer
Susan Gibides
Teresa & John Goeke
Kerry Gorla & Cathy Thurston
Timothy & Darlene Graham
Bill & Renee Granato
Lorraine Grande
Gary & Annette Grant
Marilyn & Bill Gray
Linda M Greenfield
Lori Guzewicz
Sherri Guzylak
Alice Irwin
Robert Hagemann
Shannon Hamer
Jessie Harper
Kelly & Tony Hart
Weta Hayden
Chad Hayden
Dan Hays
Patricia Heffron
Joanne Helmer
Steve & Marlo Herbert
Annemary Herson
Patty Hertz
David Hewson
Gary Heyer
Judy Hileman
Margaret Hill
Peggy & Arnon Hill-Greif
Nancy Hiscock
Margaret Hoag
Cathy Hogan
Richard & Deborah Hole
Norman & Brenda Holland
Mary Horan
Jesse Howell
Jane Hubbs
Wayne & Anne Hulbert
Mr. & Mrs. Ricardo Humerez
Robert Hunt
Sara Hunt
Thomas Hunt
Robert & Corliss Hunter
Linda O. & John W. Jackson
Raymond Jacobs
Theodore & Roberta Johndrow
Ed & Kris Jorolemon
Mary & James Kahn
Robert Kalweit
Elisa Keating
Helen M Kelley

Marie Kelsey
Virginia Kentner
Uadajane Ketcham & Margo
Denman
Ray & Laura Kilmer
Mr. and Mrs. Jeffrey King
Joy Knopp
Mr. and Mrs. Harold Knuutila
Joanne & Bob Kolch
Mary Ann Kolo
Mr. and Mrs. Donald Kortkamp
Kay Kraatz
Darlene Kraemer
Jack & Lynn Kreischer
Kathleen Krell
Mr. and Mrs. Daniel Kuhn
Carol Lafferty
Donna Lannon
Norman Lasda
Peggy Lattimore
Paula & Gregg Lawson
Larry Ledgerwood
Julie Legg
Beth & Larry Liberatore
Lianne Liberatore
Margaret & Paul Liberatore
Deborah Lindfors
Mary Littlejohn
Elizabeth Logan
Mr. John T. Long
Mr. and Mrs. Francis Lowther
Diane Lucey
David Ludlow
Patricia Lugert
Mr. & Mrs. Jerry & Diane Macaluso
Susie MacKecknie
Ms. Nancy Marquardt
Loretta Marx
Dr. Joseph Mather
William Maxwell
Bill & Cynthia McCauley
Diana McKenna
Deborah McLearn
Susan McLoughlin
John McNeill
Catherine Messenger
William Metz
Victoria Meyers
Dick Milazzo
Yael Miller
Reverend William Michatek
Gail P Mitchell

Joanne & Joe Mitchell
Chris "Blue Harp" Molloy
Thomas Monti
Mary Ellen Moochler
Mary Frances Moran
Susan Moran
Lynn Morgan
Michael Morris
Virginia Moses
Jane Mostow
MaryAnn & Felix Mucedola
Barb Murdoch
Joanne Murdock
Joanne Murphy
Nancy Nash
Donna Nedrow
Mary Nellenback
George Nettleton
Joanne Nicholson
Betty Nolan
T. Edward Nolan
Mr. Michael Nye
Michele L Nye
Don & Eileen O'Connell
Marianne O'Connor
Gale O'Neill
Judith O'Rourke
Nancy Olp
David Opp
Lawrence & Anne Owens
Michael Panek
Lawrence Pardee
Dale & Leah Parker
Patricia Patriarco
Robert Patterson
Margaret Pawlyk
Kim Peck
David Penney
Nancy Pennypacker
Lawrence Perkins
Lisa Pesce
Lois Peterson
Angela Petrus
Edward Plum
Mr. & Mrs. Robert Pohl
Kathleen Pollastro
Jean Poole
Daniel Powers
Andrea Price
Maria D Purcell
Teresa Querns
Michelle Rathbun

Diane Reichert
Emily Reid
Patrick & Anne Reilly
Teresa Resavy
Terry Rex
Anne Reynolds
Eileen Rice
Hannah Richter
Meta Riester
Buzz & Gretchen Roberts
Jon Robson
Mrs. Joanne Romano
John P. Ronan
Richard Rood
Ronald & Margaret Ross
David & Susan Rossi
John & Suzanne Rossi
Arnold Rubenstein
Chris Rusert
Franklin Russell
Beverly Ryan
Rosemary A. Ryan
Jeri Sabo
Monika Salvage
Bob Salvetti
Sam & Susan Sammarco
Carole & Joseph Sarofoen
Colleen Saxton
John Saxton
Mr. & Mrs. Gary Sayer
Jim & Debra Scala
Bob Scarbrough
Sharon Scheiwiller
Helayne Schenck
Ruth Schermerhorn
John Schmitt
Charles Schwab
Norman & Sharon Scott
Marsha Senges
Linda Simkin
John & Sandra Sinton
Bonnie Sissenstein
Jean A Shafer
Carol C Shamon
Michael Shanley
Netti Shigley
Elizabeth Shockey
Therese Shook
James W. Shults
Sinclair of Skaneateles
Nikki Slater
Edith Smith

Kate Smith
Janet M Smyth
Janet T Smyth
Susan Souhan
John Spain
Joan Spang
Lew Springer
Donna Srnka
Maureen Stadelman
Annette Stevens
Linda Stevens
Mary Ann Stirling
Ed Sulewski
Richard & Patricia Swanson
Florence Swartz
Carol Tantillo
Rebecca Tarby
Tracy Tarby
Nancy Taylor
David Tehan
Janet Tenreiro
Carol Thau
Joan & John Thomas
Kathy Wilt & Betty Thomas
Lawrence Thomas
Bent Thomsen
Dr. & Mrs. James Tift
Bob Titus
Lisa Tkacz
Elizabeth Ton
Ann Tobey
Bernie Tomasso
Susan Warburton & Elizabeth
Tracy
Michael Trapani
Sandra Travis
Dennis & Deborah Trepanier
Yoko Tsuji
Richard Tuxill
Jane & Bob Van Alstyne
Susan Van Riper
Glenn & Kathy Vogel
Earl & Jean Voorhees
Mike Wager
James Wassenaar
Sylvia Wasserman
Lauren & Steve Weber
Linda Westfall
Mr. & Mrs. Daniel Whitaker
Andy & Joyce White
Judith Whittle
Gary & Sandy Widger
Wallace Wiegert

Robert Wilcox
Holly Wilson
Richard & Marlene Winter
Barbara W Wise
Jean M Wiseman
Marianne G Dunn & Dr. Diane
Wonch
William & Mary Wormuth
Ann Wossner
Phil & Meg Yurco
Dennis Zach
Eric Zeltmann
Ziegler Family
Constance Zollo
Understudy \$50 - 149
Anonymous (13)
In Memory of Bernard Allen
Deb Geer - In Memory of Bill
Foresman
Helen & Anne Piroli - In Memory
of Dr. William H. Foresman
Chuck & Sally Reutlinger - In
Memory of Dr. Bill Foresman
In Memory of Anthony Guidone -
Sandra Guidone
In Memory of Dick Hunter
In Memory of John A. Lewkowicz
In Memory of Christine Lightcap
In Memory of Angela Rowley
In Honor of Marvin Stewart
In Memory of Leonard, Ruth, &
Preston Thomas
Sam, Lisa, Bianca, & Dommie
Vanda Albera
William Allyn
Dolores Anderson
Jan Argentine
Steve Arnold
Nancy Aumann
Cheryl & Stephen Austin
Therese Baier
Edward Bailey
Ann Balducci
F. J. & Vivian Balistreri
Carol Ball
Rosanne Barbaglia
Joyce Barnett
Roxanna E Barnum
Mr. & Mrs. William Barth
Rosanne Beach
Mary H Beardsley
Edward Benderski

Carole Bennett
Jodie Bennett
Chandler Benson
MaKenna Benson
Marianne & Raymond Berman
HB & Donna Besaw
Mr. & Mrs. James C Best
Mr. Lewis Bianchi
Patricia Bianconi
Jane & Donald Blake
Carlton & Barbara Blanchard
Orville A. Boden, Jr.
Judy & Richard Boedicker
Barbara Bok
Kim Borden
Sally A Botelho
David & Elaine Boull
Mary Bradly
Jim & Martha Bradshaw
Dan & Donna Breen
Paul & Rosalie Brennan
Evelyn Brenzel
Karen Brizendine
Kathy Brock
Margaret Brooks
Hal & Peggy Brown
Janet Brown
Jim & Nora Brown
Robin Bryant
Johanna Bucien
Kathryn Budd
Cindy Bunnell
Jan Burnap
Richard Byndas
Margaret Calder
Doug & Joan Cameron
Linda Campbell
Steven Canale
Dr. & Mrs. Daniel Cannucciari
Beth Capizzi
Marian Carfagno
Marybeth Carlberg
Linda Carr
Carolyn Case
Molly Case
Addie Castaldo
Jan Caster
Elizabeth Chandler
Dr. Brian & Mary Daye Changlai
Tim Chiavara
Patti & Gene Chilion
Ellen Clark
Joyce Clark
Jeannette Clause

Michael & Sharon Colabufu
Marie & Larry Cobado
Bradley Cole
William & Martha Cole
Gary Colella
Toni Colella
Elizabeth Coleman &
Patricia Gregory
Sharon L Coleman
Trisha Collier
Joanne Condron
Chele Conley
Heidi Connolly
Teri Connor
Pam Cosser
Alma Cotes
Jean Cottrell
Bonnie Cronk
Nancy Crawford
Mr. & Mrs. Tom Cuff
Marilyn Joy Cupido
Ms. Sheila D'Agostino
Susan Dailey
Eileen Daloia
Deborah Darling
Andrea Dahl
Judy Davis
Linda Davis
Fran Decker
Ellen DelloStritto
Sue Deluca
Jeanne Denti
Wayne Dentino
Joe & Carol DePierro
Eileen Deuell
Carol Devaney
Julie Dibagio
Craig Dickhaus
Diane & Michael Dolcemascolo
Candace Dominick
Rod & Betsy Donald
Linda Douglas
Beth Drew
Patricia Drummey
Robin Dudden
Margaret Dushatinski
Carol Dyer
Christine Edinger
Laurie Elliot
Lorrie Emerson
Elizabeth Etoll
Linda Eygnor
Kay & John Falcone

Mr. Thomas Falicchio
Gerald Ferro
Dave & Helaine Feikert
Dave Feldman
Sally Fellows
Mark & Susan Field
Cathy Finley
Alan & Ellen Fish
Richard & Dona Flaherty
Christine Fluke
Gary Foley
Bonnie Ford
Cynthia Fowler
Virginia Fowler
Melissa Frendak
Diane Frey
Jo Ann Fuller
Susan Furst
Sherry Gabak
Walter Gable
Patricia Gacioch
Robert Gage
Sue & Bob Gage
Ms. Patricia Gallagher
Toni Gallagher
Mary Ann Gambitta
Mr. and Mrs. Steven Garner
Brian Garrett
Gail Garropy
David Garvey
Marj Gavin
Linda & Anthony Gero
Susan Gewinner
Lisa Giannone
Jackie Giannotta
Susan Gilmore
Peg Ginnis
William Goertemoeller
George Goldberg
Richard Golden
Linda Goodness
Kathleen Graber
Carol Graham
Kathy & John Graham
Jennifer Gray
Marilyn Gray
Janice Greco
JoAnn Greco
Richard Green
Eunice Greene
Mr. and Mrs. Ed Gremli
Suzette Grinnals
Patty Grinnell

Carolyn Guariglia
Amy Gulliver
Kathleen Gutberlet
Stan & Chris Gutelius
Nikki Guzalak
Kerry Haber
Jack & Karen Haggerty
Lamont Hahn
Janet & Richard Haines
Sylvia Hall
Fred & Lynda Hamberger
Leslie Hamilton
Roberta Hampson
Beverly Hancox
Kathy Harding
Joanne Harland
Charlotte Harvey
Pam Head
Marie Heck
Barbara Herrmann
Jeanne Herst
Joni & Bob Henderson
Roger Hiemstra
Antonia Hirtler
Robert & Alice Hoatland
Sara Hoffee
Patrica Hofsommer
Judy Hogan
Rose Hogan
Tom Hooker
Clyde Howard
Renee Huband
Linda Hudson
Dorothy Humm
Nancy Hyatt
David Ingram
Mona & Al Jackson
Nora James
Millie & Nelson Jameson
Jan Jenner
Robb & Lin Jetty
Barbara Johnson
Amy Jorolemon
Ed & Linda Kabelac
Courtney Kasper
Mary J Keady
Phyllis & Jim Keeley
Jack Keiser
Deborah Kelly
Norma Kemp
James & Mary Kennedy
Carol B. Kenny
Suzanne Klink
Theresa Kline

Mr. and Mrs. Joan & Ken Knight
Valerie Koll
Michele Kolodij
Wendy Kopley
Vickie Krul
Mr. and Mrs. Kevin Krystofik
Ann Kubarek
Vincent LaFratta
Lynda Langley
Frank Lattimore
Kurt Lavin & Marilyn Durbin-Lavin
Joyce Lawless
Lois Laxton
Mary Layo
Diane Lehner
Joann Lenweaver
Barbara Lester
Eileen Lewis
Patti & Gary Lewis
Joyce & Tony Lobisco
Mr. & Mrs. Anton Loewy
William & Christine Long
Jody Longeill
Tara Lounsbury
Neil & Janie Loveless
Raymond Luber
Mary Lyke
Keith & Deborah Lyons
Twila MacDuffee
James MacKillop
Erin MacArthur
Rose MacArthur
JoAnn Mack-Wink
Sharon & Jim Maher
Doreen Mahunik
Robert & Laureen Maiorano
Lucille Mamorella
Mary Manuel In Memory of Tom
Manuel
Mr. and Mrs. Paul Markley
Gail May
Carolyn McBride
Mary McClenathan
Julie McDowell
Bill & Aloma McElwee
Sandy McGovern
Beverly McKay
Elizabeth McLaughlin
Charlotte & Stuart McLeod
Ruth McLoughlin
Betty Mae McMahan
Irene McQueeney
Joseph McSweeney

Carole Menzel
Patricia Messina
Anrim H. Meyburg
Laurie Michelman
Judi Miladin
Joseph Miles
Robert S. Miller
Doug Millis
Anne Milne
Charlene Mitchell
Liz Mizro
Ryan Moe
Jan & Colin Monteith
James Moore II
Robert Moorhead
Linda Moran
Sheila Mourin
Mark & Sandy Murray
Ann Marie Nadge
Kathy Nastasi
Sylvia Neill
Sally Neumann
Richard & Janet Newman
Barb Nichols
Jeanne Nolan
John & Josie Baccoli, MaryAnn
Pembroke, Cindy Nolte
Courtney Norton
Lynn Notarpole
Maureen Nupp
Gary & Bonnie Nye
Christine & Charles Ockenfels
Bronwin O'Connor & Ted O'Hara
Norma Odell
Sally O'Herin
Barbara & Willis Osborn
John Paddock
Timothy Padlick
Bob & Ann Padula
Serene Palozzi
Janice Panasci
Michael & Joan Panek
Sandra Panek Scudder
Constance Patterson
Dick & Marie Paulino
Denise Pearsall
Marjorie Peech
Janice Pedersen
Terry & Sue Pensabene
Mrs. Kathryn Pepe
Harriet Peters
Carole Pettigrass
Dr. Joseph Phillips

Sandy Pine
Marsha Pitcher
Mr. & Mrs. Polinsky
Elaine Poole
Maria Poplawski
Richard Portland
Sharon Powers
Mrs. James Preston
Judy Precious
Nancy & Al Prosser
Nancy Putman
Quality Care Carpet Cleaners
Susan Querns
Allen Quinlan
Amalie Quinn
Louis & Joan Ragonese
Nancy Randall
Mary Raymond
Alona H Redden
Judy Reed
Patricia Reeve
Ms. Cheryl Rehwinkle
Jeff Reichert
John & Dorothy Reiffenstein
Connie Reilley
Mary Ellen Reistrom
Marjo & David Reitsma
Jack Rejman
Joyce Rendano
Lorilyn Reynolds
Karen Rich
Ronald Richer
Louis & Barbara Rizzieri
Dan & Aggie Robert
Susan Roberts
Henry & Susan Rocholl III
Peter Rogers
Linda Rollinson
Frank & Arlene Romano
Cynthia Rooker
Valerie Rowe
Pat & Janet Rudney
Rebecca Rury
David Rusinko
Donna Sadowy
Arthur Samplaski
Maria San Jule
Dr. & Mrs. Americo J Santillo
Ron Sapio
Frank & Pauline Satterly
Barbara Sawyer
Beverly C Sayles
Kathy Scanlon

Patrice Scarcelli
George & Ellen Schaffer
Ms. Tobi Scheck
Carol Scheele
Judith A Schluter
Kim Schooley
Virginia H Schram
Tom Schuster
Carolyn Schwab
Richard Schwind
Bradley Scott
Paul Scozzari
Rose G. Seely
Donald Seitz
Mary Lou Sharpe
Sharon Shaw
Nora Sheldon
John & Lucy Shults
Cheri Sigmund
Patricia Sivers
Karen Skardinski
Lynda Skibitsky
Barbara Slenger
Ann Sloan
Nancy Sloan
Mr. & Mrs. Steve Sluty
Carol Smith
Jane E Smith
Joslyn Smith
Marilyn J Smith
Martha Howland Smith
Dr. C. Jane Snell
Patty Snyder
Nancy Soules
Kristl Spalding
Mary Ann Sparnon
Stacy Spaulding
David St. Amour
David & Helene Stapleton
Maria Starr
Pamela Stepien
Helen Stevens
Dick & Norma Stevenson
Jill Strand
Ann Streeter
Margaret Stroman
Sandra Sutor
Martha Sutter
James Sutton
Judy Swartwout
Richard Swinehart
Mary Jane Szczesniak
Martha Taffaro

Michael Tafler
Kayann Taylor
Nancy Taylor
Dr. & Mrs. Michael Tersegno
Virginia Testa
Sylvia Thayer
Michael Thornton
Angela Thurlow
Esther Thurston
Richard & Maureen Timian
Edeltraud Timmons
Mabel Townsend
Dr. & Mrs. Raymond Traver
April Tucker
Maureen Tyler
Don & Wendy Valentino
Paul Valentino
Marcia Valerino
Betsy Van Norstrand
Gary Van Norstrand
Judy Van Norstrand
Jule Van Sant
E Kathleen Van Wie
Pam Vitale
Sharon Vreeland
Linda Wagenet
Sophia Wales
Donnelle Walter
Fran Walter
Mr. & Mrs. Ellis D Ward
Rosalie Ward
John & Diane Wargo
Diane Warren
Bill Watkins
Sharon Wells
Beverly Wernet
Barbara Wernham
Fredrick & Sharon Westover
David & Heather Wheat
Ron & Jean Wheeler
David White
Carol Whitmore
Mary Widger
Lee Wigfield
Stacie Wiggins
Mary Willey
Patricia Williams
Ross Willink
Leonard & Judy Wiltberger
Bjorn Woldbeck
James Wolfanger
Barbara Woods Fethers
Pat Woodworth

Michael Wysocky
Margot Yager
Stephanie Young
John Yurco
Norene M Zegers
M. Jane Zimmer
Art & Shirley Zimmer
Loretta Zolkowski

“BEST SEAT IN THE HOUSE” DONORS

B-101 Auburn Club of Zonta International
B-102 Gloria M. Stootman, CPA
B-103 Judy Freeman
B-104 Dick Freeman
B-105 In Memory of Elma Gable
B-106 Sarah Applebee
B-107 Dr. & Mrs. C. David Smith
B-108 Brian Bauersfeld
B-109 In Honor of Sister Walter Anne O'Malley,SSJ
B-110 In Memory of Anna Riccobona
B-111 Auburn Service League, Inc. 1954-1998
B-112 In Memory of Miss Camille Kruszynski
B-113 “Miss K” from Her Students
B-114 Stella Germano
B-115 John & Teresa Goeke
B-116 In Memory of Patricia Prudom
C-101 John G. Rubino
C-102 Dee Rubino
C-103 Richard J. Zwirn
C-104 In Memory of David Wakefield Corning
C-105 In Memory of Alphonse & Frances Maiorano
C-106 In Memory of Emilio & Rose Passaro
C-107 Robert Sanders
C-108 In Memory of Paul M. Landis
C-109 In Memory of Earl & Ruth Grace
C-110 Weedsport Community Theatre
D-101 In Memory of Mr. & Mrs. Bernard J. Gaffney
D-102 Viola Kraatz
D-103 In Memory of Mom, Al & Bob Kraatz
D-104 Mr. & Mrs. James J. Criazzo

D-105 Donna M. Swan
D-106 In Memory of J. Kraft Vorreuter
D-107 Mr. & Mrs. Thomas Walsh, Jr.
D-108 Thommie Walsh
D-109 Richard Boni
D-110 Kitty Boni
D-111 Leigh Anne Boni
D-112 Robert & Gillian Donaldson
D-113 Richard & Ginger Burkhauser
D-114 Emily N. Keiser
D-115 Michele L. Keiser
D-116 Tom & Patty Stopyra
D-117 Wesley and Ruth Miller
D-118 Enjoy The Moment! Mrs. Betty Connors
D-119 In Honor of Barbara (Grace) Luke
D-120 Gordon and Eunice Grace
E-101 Linda Anne Rooker
E-102 Toni Landau
E-103 Mr. & Mrs. Vincent Klein
E-104 George & Ann Jacobs
E-105 John Baader
E-106 In Memory of Edwin A. Riggs, Jr.
E-107 Todd Lattimore
E-108 Pamela S. & Stephen A. Kirkwood
E-109 Janet Scarbrough & Bill Dorr
E-110 Grace C. Simmons
E-111 The Auburn Players
E-112 Carlton & Shirley West
E-113 Richard & Ann Landers
E-114 George & Jean Kerstetter
E-115 Bill & Patty Lupien
E-116 Alex & Mary Alice Lipski
E-117 Irene B. Murphy
E-118 In Memory of Phyllis Goldman
E-119 William Goldman
E-120 Ron Munn
E-121 Becky Munn
F-101 Adams & Son, Inc.
F-102 Carmen & Anne Marie Cosentino
F-103 Patricia A. Randall, MD
F-104 In Memory of Gardner Kyle
F-105 Mary Moore
F-106 Katie Schimizzi
F-107 Patsy Rogers
F-108 Tom & Claudia Rogers
F-109 Greg & Linda Szczepanski
F-110 The Reutlingers
F-111 Megan Dorr
F-112 Bridget Dorr

F-113 In Memory of Rick Farwick
F-114 Doug's Fish Fry-Skaneateles
F-115 Sally & Ray Paleczny
F-116 John & Shirley Barber
F-117 In Memory of Carmel M. Malvaso
G-101 Art Foresman
G-102 Joanne Foresman
G-103 Bob Foresman
G-104 Charlie Beck
G-105 Ellie Beck
G106- In Honor of G Alan Clugston
G-107 In Memory of Bonnie Mather
G-108 Vincent Telesco
G-109 In Memory of Agnes D. Swayne
G-110 Mr. & Mrs. Francis Timian
G-111 Emily Reutlinger
G-112 Martha Reutlinger
G-113 In Memory of Marian Prockup
G-114 Doug & Clara Clark
G-115 In Memory of Kenneth Kupferberg
G-116 ACC/CCC Alumni Association
G-117 Connie Mazur
H-1 In Memory of Anna Schonning
H-2 In memory of William V. Emerson
H-3 Happy Birthday T.D. LaClar 7/03
H-4 Carolyn S. Emerson
H-101 Harold M. Henderson - Man of Music
H-102 Martha E. Henderson
H-103 Mr. & Mrs. Robert L. Herman
H-104 In Honor of Sherry S. Samuels
H-105 In Memory of Frank L. DeFurio, MD
H-106 In Memory of Josephine P. DeFurio
H-107 Mrs. Alice B. Sherman
H-108 Monroe Family
H-109 Dr. Bruce Gutelius
H-110 In Honor of Our Parents Port Byron HS Class of 2000
H-111 In Memory of Darlene Denise Smith
H-112 In Honor of Dr. Linda A. Townsend
H-113 Julia Wagner
H-114 Alex Kinal Wagner
H-115 Ann McKeon

- H-116 Liz Van Der Woude
H-117 Mrs. Curtis Smith
I-1 In Memory of Evelyn P. Hoskins
I-2 Kenneth Guy
I-3 In Memory of Meredith "Pete" Grant
I-4 June Guy
I-5 Ed & Nancy Davis
I-6 Honoring Virginia Porten. Love Gary, Lois, Gin, Chris
I-101 Phil and Diane Windsor
I-102 In Memory of Esther Kramer Reddrop
I-103 In Memory of Myrle E. Lee
I-104 In Memory of Susan B. Near
I-105 In Memory of Robert C. Paddock
I-106 In Memory of Sandra J. Paddock
I-107 Gertrude Villhauer
I-108 William E. Abdallah
I-109 Margaret H. Abdallah
I-110 In Memory of James F. Cavanaugh
I-111 In Memory of W. J. Near, Jr
I-112 In Loving Memory of Brian J. Hanley
I-113 Happy 48th Ken & Beulah Pollard
I-114 Frances Robb Bowman
I-115 Joseph W. Pine
I-116 In Honor of Edward Sayles
I-117 In Memory of Beatrice A. Rindge
J-1 In Honor of Allan Snider
J-2 Esther Corey Riester
J-3 In Honor of Elizabeth Snider
J-4 Meta H. Riester
J-5 Dr. Thomas Austin Clary
J-6 In Memory Eleanor S Clark
J-7 Barbara Ann Clary
J- 8 In Loving Memory of Natalie Sears Clark
J-101 In Memory of Natalie K. Keogan
J-102 John & Barbara Petrosino
J-103 In Memory of George & Martha Newell
J-104 In Loving Memory of Thelma Vine
J-105 Frederica & Julia Dudley
J-107 In Memory of Vivian Hoskins
J-108 In Memory of Bill Shigley
J-109 In Loving Memory of Jane Slazer Kruger
J-110 In Loving Memory of Larry Kruger
J-111 Terry & Jack Hickey
J-112 SIL
J-113 Mary B. Giannino
J-114 Edward N. Giannino
J-115 Jeff Van Orman
J-116 Marion & Mike Oropallo
J-117 Robert & May Henderson
K-1 Lee N. Shaw
K-2 In Memory of John E. Bohall
K-3 Corinne Shaw
K-4 In Memory of Al King
K-5 F. Eugene Riley
K-7 Lois Vibbert Riley
K-9 In Honor of Alice B. Sherman
K-10 Honoring Laura W. Conley With Love, Your Children
K-101 Charles Hurst
K-102 Becky Hurst
K-103 In Memory of Thom & Jane Sebastian
K-104 James-Francis-Gallery, 3-24-35 Actor 2-5-01
K-105 LeMoyne College, Boot & Buskin 1957
K-106 Marvin Druger
K-107 Patricia Druger
K-108 KOZMO
K-109 In Loving Memory of Anne Morrissey Burns
K-110 Marsha K. Burns
K-111 In Memory of Mildred Kinary
K-112 In Memory of Kelly Green Lipiska - Love Mom & Dad
K-113 James "Dean" McNickol
K 114 In Honor of Ed Sayles From the 2014 MGR Staff
K-115 Beverly Wiggins
K-116 G. John Wiggins
K-117 Willis & Cynthia Watkins
L-1 Dick & Barbara Wood, Love Never Ends
L-2 In Memory of Richard Lepak
L -3 In Honor of Joan Nill
Howland - Martha Howland Smith
L5- Stephen & Kay Kraatz
L-11 In Memory of Franklin J. Sherman
L-101 In Memory of Charles & Jane Strong
L-102 In Memory of Monica Mochler
L-103 In Memory of James J. Locastro
L-104 Brenda & Larry Kayn
L-105 David A. Stookey II, LHS "The Music Man" 2004
L-106 In Loving Memory of Donald & Rosemary Lambert
L-107 Beth Lattimore
L-108 Sydney Lattimore
L-109 Sean Lattimore Jr.
L-110 Sean Lattimore
L-111 Happy 40th Birthday, Sherie Ramsgard
L-112 Jane & David Bates, Sept 4, 1956
L-113 In Memory of Tony Donofrio from Clark & Mary Tucker
L-114 Stacy Blackburn Thank You Aug 2, 2000
L-115 Susan Watkins Carter
L-116 Thomas Reese Watkins
L-117 Andy & Betty Walker
M-1 In Loving memory of Catherine Sigona
M-2 Bob and Joan Haff
M-3 In Loving memory of Kimberly A. Troisi-Paton
M-5 In Loving memory of Anne Cerio
M-7 Nothing Remains without Change – Lisa Sigona
M-9 In Loving Memory of Arlene Butera
M-11 Loving Honor Cathy Troisi "My Sissy, Love Lil' Sis"
M-101 In Loving Memory of Patricia Gwynn Taft
M-102 In Memory of Edie Binnert
M-103 Patty & Bob Hunter
M-104 Class of 1955 East High
M-105 In appreciation of Michael R. Nye
M-106 In Memory of Carolyn Nye
M-107 In Memory of Mary L. Thorpe
M-108 Auburn East High Class of 1960
M-109 Mattie & Glen Manuel Ronald Lunkenheimer
M-110 In Memory of Carl & Betty Zachman
M-111 Katharine W. Clugston, Mother
M-112 Phil R. Clugston, Father
M-113 Kate T. Clugston, Aunt
M-114 Skip, Kim & Laurel Lehman
M-115 In Memory of Charles &

Isabelle Bacon
 M-116 In memory of Fred P. LePine
 M-117 In Honor of Peg Bisgrove
 N-1 In Memory of Joan Vadeboncoeur
 N-101 Ralph & Joy Getty
 N-102 Chuck Savage so enjoyed evenings of music here!
 N-103 In Memory of Joan E. Costello
 N-104 In Memory of Brian N Vitale
 N-105 Blanche Kent Durbin, with love, your family
 N-106 In Memory of Seth E. Durbin
 N - 107 In Memory of Jane C. Orser
 N-108 Elaine Stauss 1934-2011
 N-109 Donna & Michael Glowacki From their Family
 N-111 Zinc & Jean La Douce
 N-116 J S Klink 40th Ann., 8-30-09
 N-117 Arthur J. & Ruth McQueeney, Donnelly Deo Gratias 135
 O-101 Robert T. Murdock
 O-102 In Memory of Arthur Storch
 O-117 I Believe, Carole L. Brown, O:NEN
 P-1 Roots too strong to fall Parade 2017
 P-101 Frank & Mary Pace
 P-102 Phil & Mary Pace Cefaratti
 P-117 From 1975 Marion Rogers and Sharon Young Love MGR
 Q-101 In memory of Howard P. Hartnett
 S2- Mary A DeMasi
 S-11 In Memory of George G. Souhan
 S-101 In honor of Malcom Skipton & Deb Geer
 T-2 Beverly Baker
 T-4 Donald E. Whitman, III
 T-1 David F. Gwynn
 T-3 Vivian Sciarabba
 U1- In Celebration of Ann Jerris
 U-2 Bob Popyk, EHS Class of '58
 U3 - Aquilina / Jerris Family
 U-4 Don & Linda Brandstetter
 V-1 In honor of Carolyn G. DeSantis
 V-2 Tony V. Martino
 V-4 Joyce T. Martino
 V112- Best Friend, Lynnette Lee
 V113- Best Friend, Sue Dec
 W-101 Thank You Doxie Sherman Our # 1 Volunteer Usher

“BEST SEAT IN THE HOUSE”
 IS A GREAT WAY TO HONOR A LOVED
 ONE, FRIEND, OR YOURSELF WHILE
 SUPPORTING THE REV THEATRE
 COMPANY.

VISIT
**THEREVTHEATRE.COM/
 BEST-SEAT**
 TO GET THE BEST SEAT IN THE HOUSE!